

CBA-216-25Csj

PROPOSED RESIDENTIAL BUILDING SARAI CARILLO & EGBERT DIEGO

TO BE BUILT IN CONSEJO ROAD S.E.,
COROZAL DISTRICT, BELIZE C.A.

DRAWING INDEX

PERSPECTIVE

SHEET TITLE

General Notes
Location Layout and Site Plan

Architectural Plan
Dimension Plan
Elevation A & B
Elevation C & D
Sectional Elevation X-X' & Y-Y'
Windows & Doors Schedules

Foundation Plan & Reinforcement Details
Column, Wall Joint, Window Sill & Lintel and General Details Plan
Roof Beams Layout & Reinforcement Details
Roof Slab Reinforcement Layout
Roof Parapet Layout & Reinforcement Details

Electrical Plan

Plumbing Plan
Septic and Soak Away Details Plan

SHEET NO.

2513-G1
2513-G2

2513-A1
2513-A2
2513-A3
2513-A4
2513-A5
2513-A6

2513-S1
2513-S2
2513-S3
2513-S4
2513-S5

2513-E1

2513-P1
2513-P2



******* NOTICE *******

You are reminded that the curtailed check system covers only the fundamental issues of a building proposal. Although non-fundamental issues were raised it did not prevent us from offering a NO OBJECTION to the submission.

CBA expect that all contravention of the Belize Building Act and its subsidiary legislation are rectified as and when they are discovered and in any event before completion of works and the issuance of an Occupancy Permit. In this connection, we ask you note that the Central Building Authority attaches great importance to the proper assumption of duties and responsibilities by authorized persons and Registered Architects and/or Engineers.

REVIEWED
By A. Kevin Cob at 1:09 pm, Apr 15, 2025



MATERIAL HATCH

	CAST CONCRETE
	EARTH
	4" 6" TH BLOCK WALL CAVITY FILLED & REINFORCED
	SHEET ROCK WALL 2 FACES 1/2" TH ON
	REINFORCED CONCRETE COLUMN
	WINDOW SYMBOL
	DOOR SYMBOL

ABBREVIATIONS

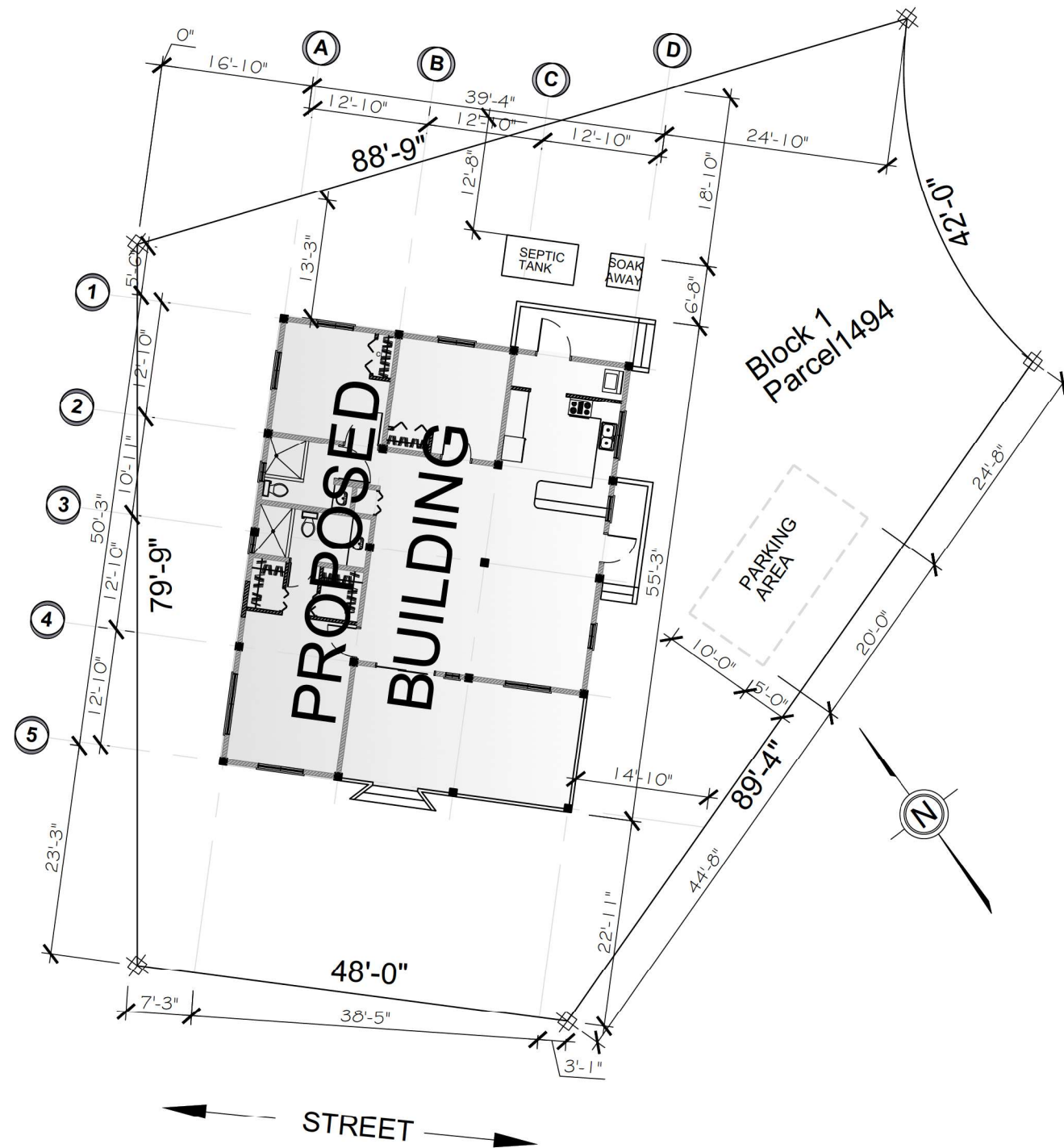
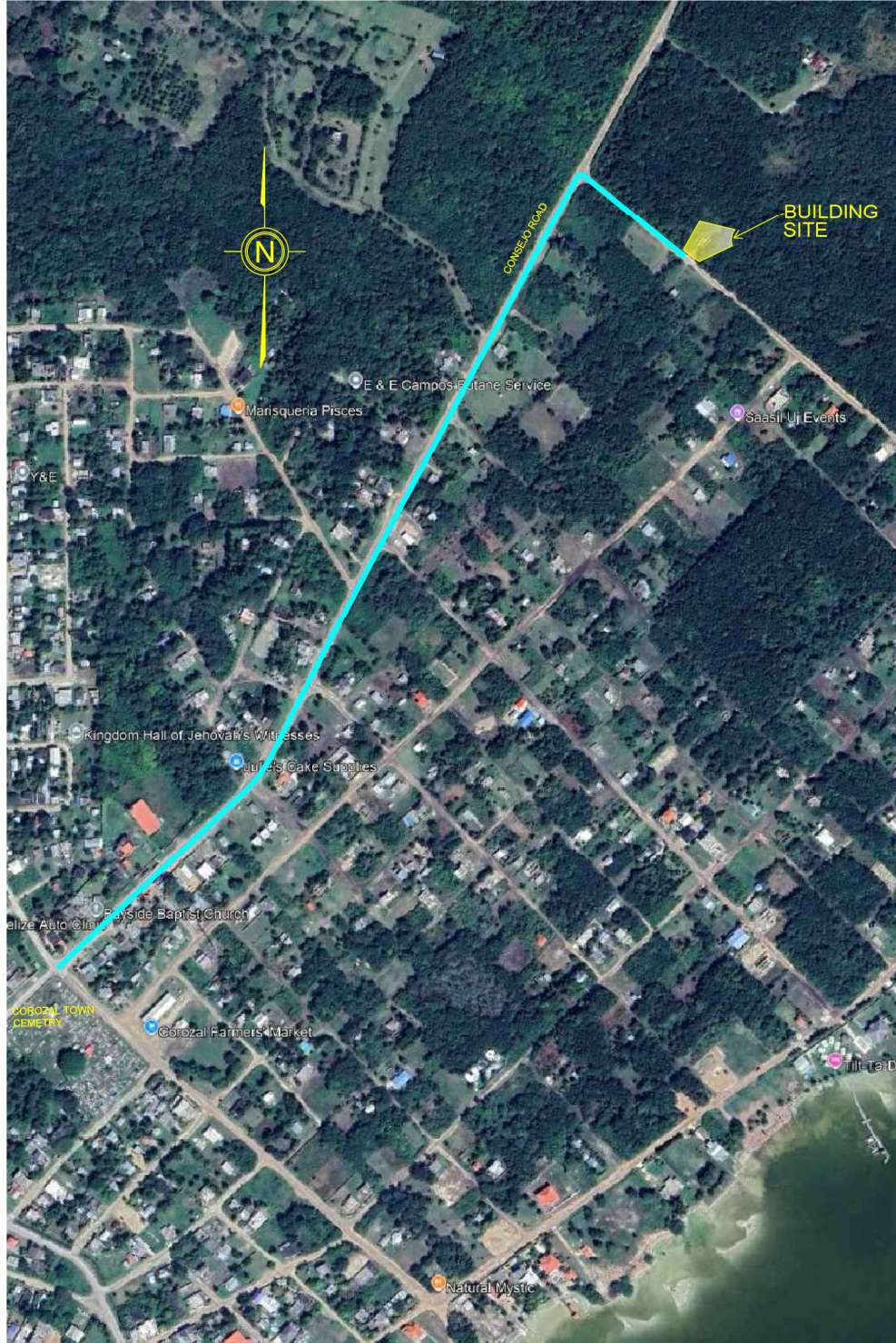
@----- at	CL. --- Closet
BLK----- Block	C/L --- Center line
BLDG.-- Building	COL----- Column
BOT----- Bottom	CONC.-- Concrete
B.W.----- Both Ways	CRS----- Centers
c/c ----- Center to Center	DIA.----- Diameter
o/c ----- On Centers	D.P.M--- Damp Proof Membrane
C.M.U--- Concrete Masonry Unit	DN----- Down

SYMBOLS

	BUILDING SECTION SYMBOL --- Section View Direction --- Section Name --- Section Cut Line
	DETAILS SECTION SYMBOL --- Detail Name --- Section Cut Line --- Page Location
	ELEVATION SYMBOL --- Elevation View Direction --- Elevation Label
	INDICATION OF DETAIL --- Detail Name --- Page Location
	STRUCTURAL AXIS Letters In One Direction Numbers In The Other Direction
	CHANGE IN LEVEL High Low
	LEVEL SYMBOL +2'-0" abv. GL. --- Level in Feet & Inches
	FLOOR LEVEL SLABS/ FLOOR LEVEL SYMBOL +10'-0" --- Level in Feet & Inches --- Level Symbol --- Name of Level

	IDENTIFICATION TITLE --- Title Name Scale: --- Scale
	INTERIOR ELEVATION SYMBOL 01 --- Page Location 04 (A-01) 02 --- Elevation ID 03 --- Elevation ID

DWG.--- Drawing	G.L.----- Ground Level	MIN.----- Minimum	SQ.----- Square
E.L.----- Elevation Level	GYP.----- Gypsum	PSI----- Pounds per Square inches	Thk.----- Thick
EXT.----- Exterior	HORIZ-- Horizontal	R.C.----- Reinforced Concrete	TYP.----- Typical
FDN.--- Foundation	IN.----- Inches	Reinf.--- Reinforced	VERT.--- Vertical
F.F.L.--- Finished Floor Level	INT.----- Interior	/Reinforcement	W/----- With
F.L.----- Floor Level	KVA.----- Kilovolt Amperes	SCH.----- Schedule	
FT.----- Feet	LIN.----- Linen Closet	S.F.L.--- Structural Floor Level	
GALV.--- Galvanized	MAX.----- Maximum		



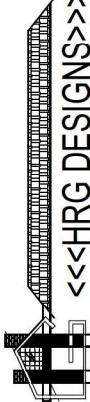
LOCATION PLAN
SCALE: N, 1:5

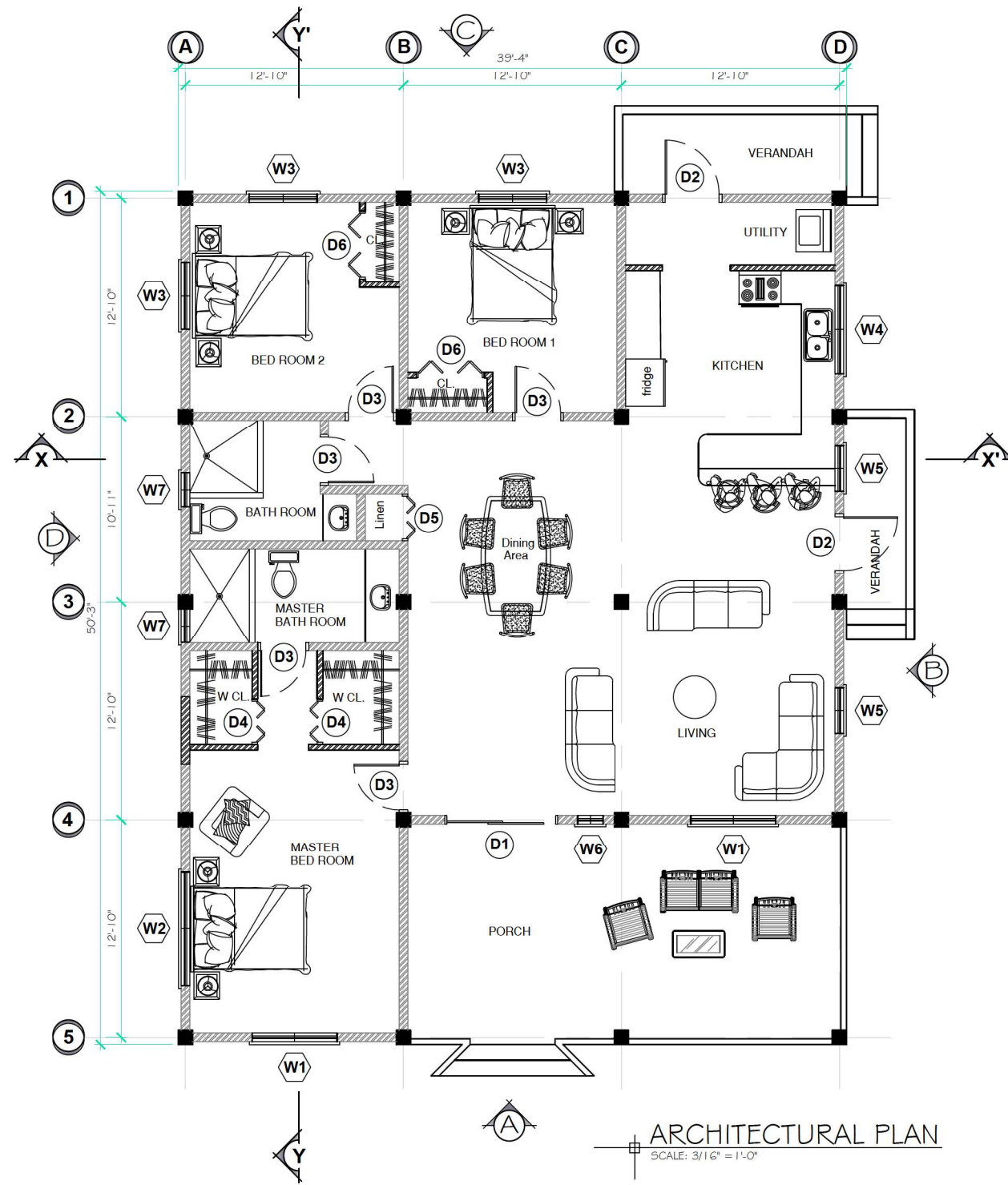


SITE PLAN
SCALE: 3/32" = 1'-0"

PROPOSED RESIDENTIAL BUILDING SITUATED IN CONSEJO ROAD S.E.,
PARCEL 1494, BLOCK 1, COROZAL DISTRICT, BELIZE C.A

REVIEWED
By A. Kevin Cob at 1:09 pm, Apr 15, 2025

Revised by Registered Professional	
 BV, CZL, BELIZE C.A. nick@hrgdesigns.com (501) 660-1690	
PROJECT	PROPOSED RESIDENTIAL BUILDING
TITLE	LOCATION & SITE PLAN
CLIENT	S. CARILLO & E. DIEGO
CAD FILE REF	C:\Program files\Auto Cad \Projects\CZL
Drawn Scale	1:1
Plotted Scale	As Shown
Design	HRG
Drawn	HG/AG
Checked	HG
Date	2025
DWG. SHEET No.	2513-G2
REV.	A/1



ARCHITECTURAL PLAN
SCALE: 3/16" = 1'-0"

REVIEWED
By A. Kevin Cob at 1:09 pm, Apr 15, 2025

Revised by Registered Professional



PROJECT
PROPOSED
RESIDENTIAL BUILDING

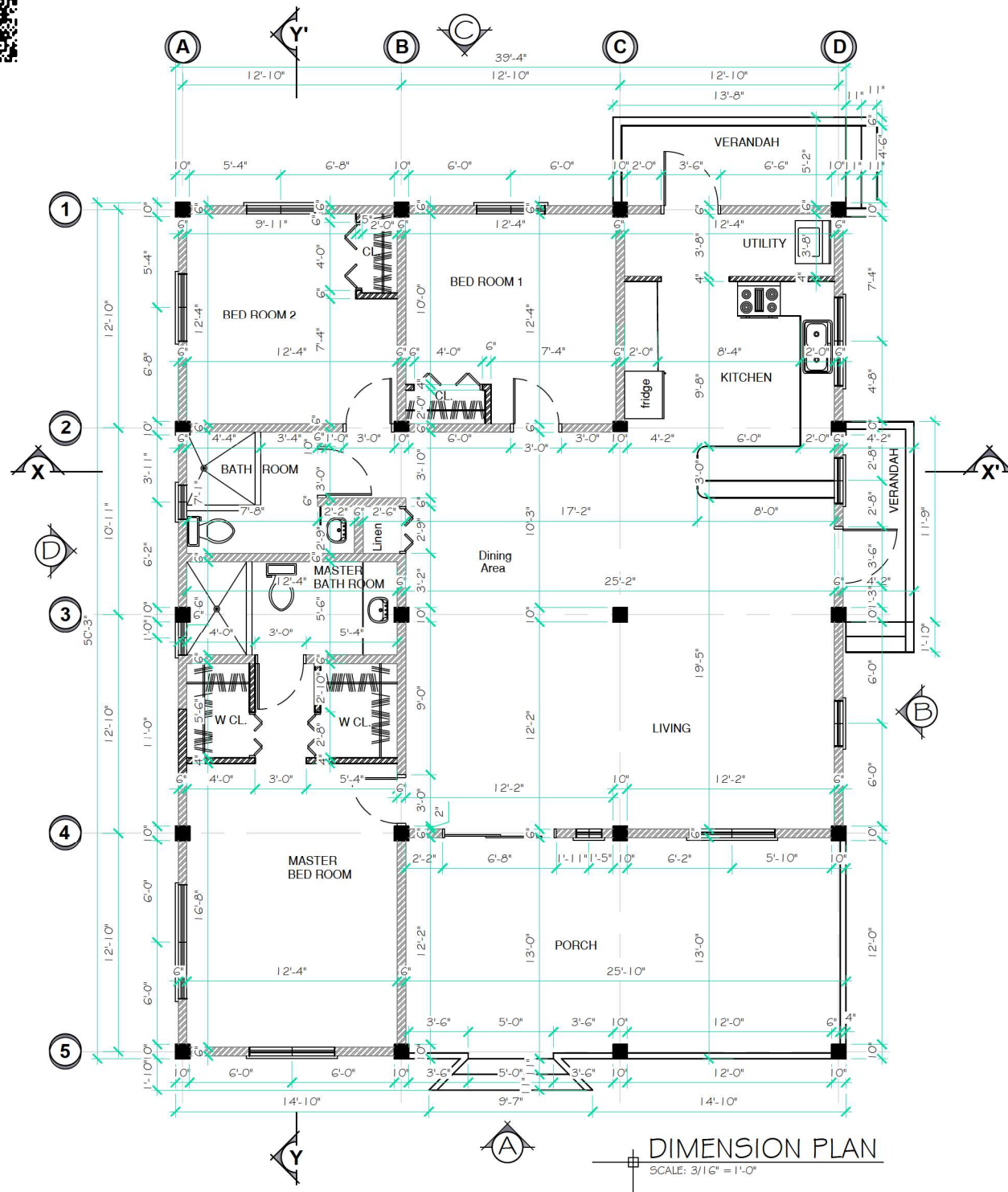
TITLE
ARCHITECTURAL PLAN

CLIENT
S. CARILLO & E. DIEGO

CAD FILE REF
C:\Program files\Auto Cad\Projects\CZL

Design	HRG	Drawn Scale	1:1
Drawn	HG/AG	Plotted Scale	As Shown
Checked	HG		
Date	2025		

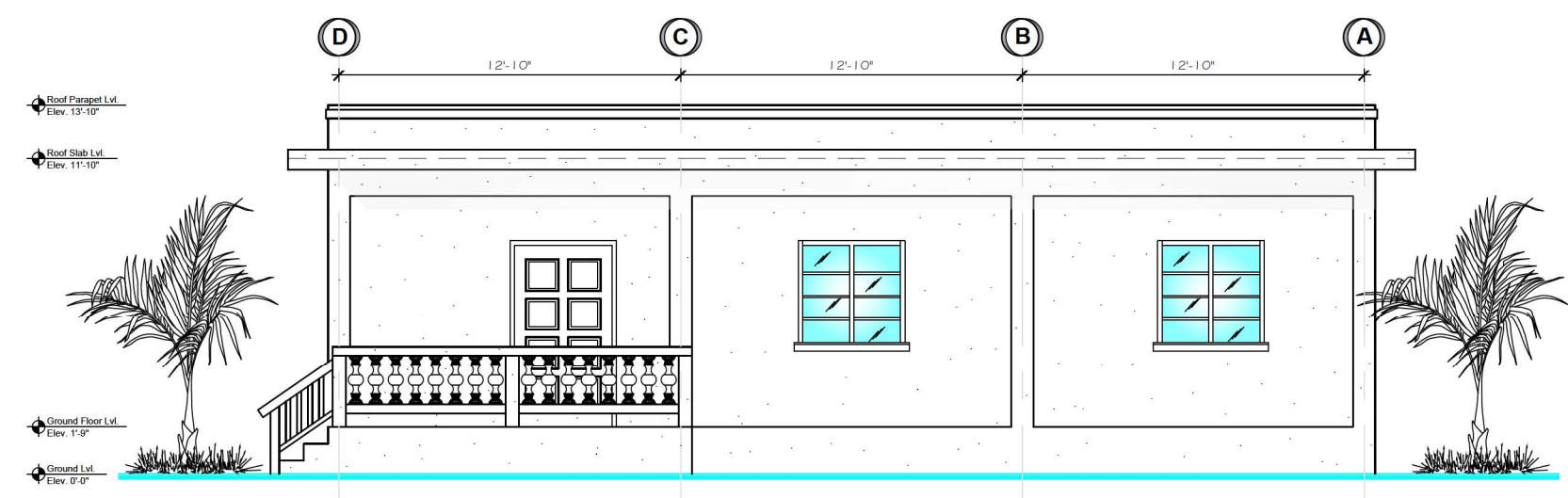
DWG SHEET No.
2513-A1
REV.
A/1



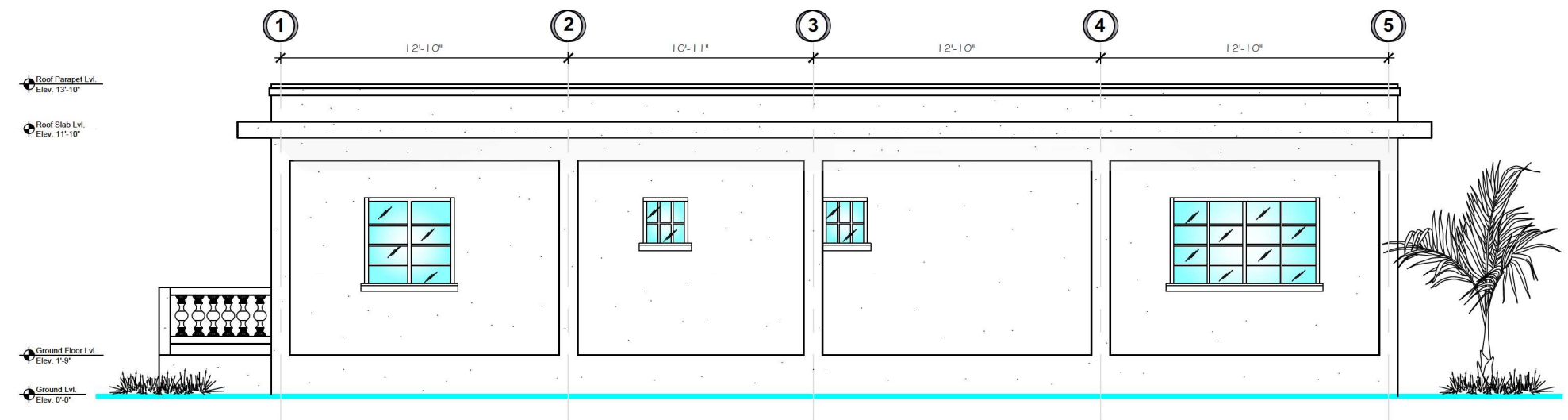
REVIEWED
By A. Kevin Cob at 1:09 pm, Apr 15, 2025

Design: HRG Drawn: HG/AG Checked: HG Date: 2025		Drawn Scale: 1:1 Plotted Scale: As Shown	DWG SHEET No. 2513-A2	REV. A/1
CLIENT S. CARILLO & E. DIEGO		CAD FILE REF C:\Program files\Auto Cad\Projects\CZL		
PROJECT PROPOSED RESIDENTIAL BUILDING		TITLE DIMENSION PLAN		
Revised by Registered Professional				

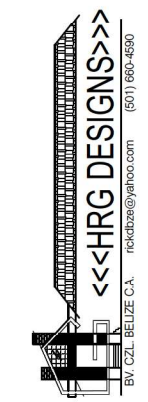




ELEVATION C
SCALE: 1/4" = 1'-0"



ELEVATION D
SCALE: 1/4" = 1'-0"



B.V. CZL BELIZE C.A. rickobze@yahoo.com (501) 650-4590

PROJECT
PROPOSED
RESIDENTIAL BUILDING

TITLE
ELEVATION C & D

CLIENT
S. CARILLO & E. DIEGO

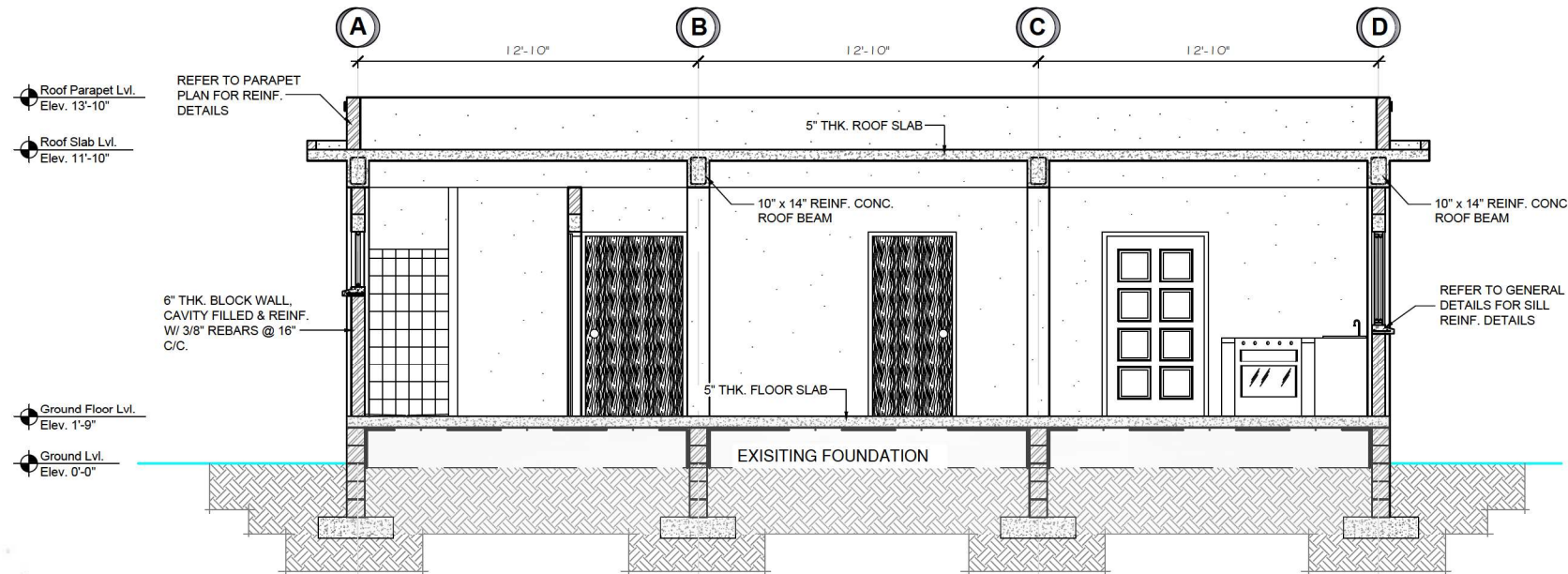
CAD FILE REF
C:\Program files\Auto Cad\Projects\CZL

Design	HRG	Drawn Scale	1:1
Drawn	HG/AG	Plotted Scale	As Shown
Checked	HG		
Date	2025		

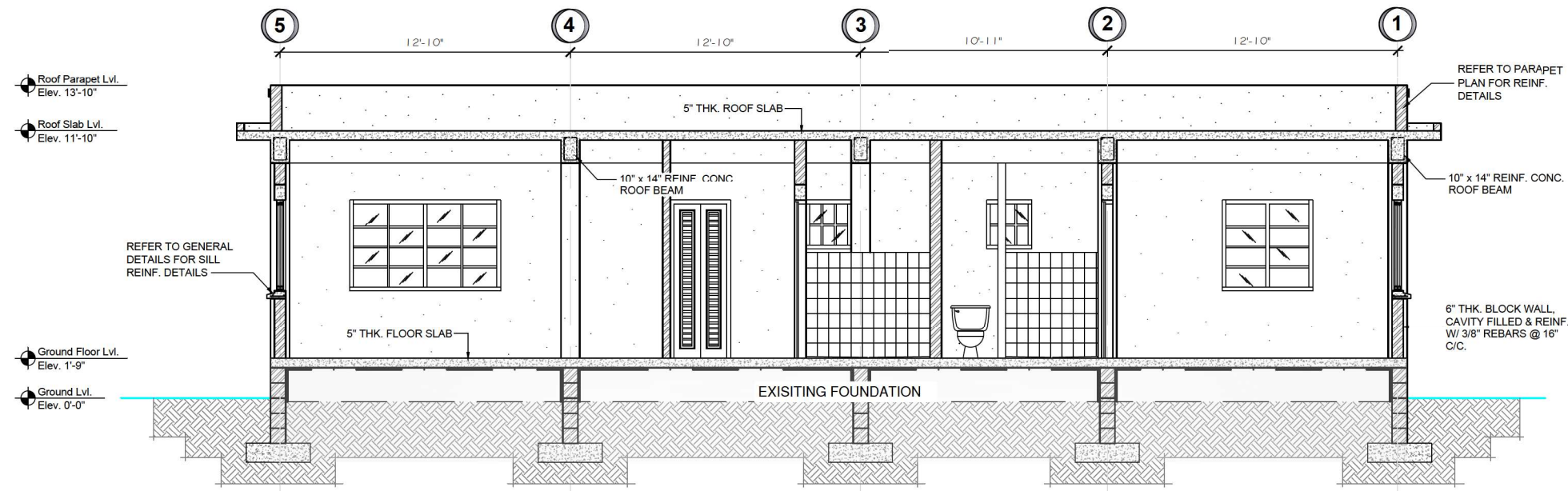
REV. A/1

DWG SHEET No.
2513-A4

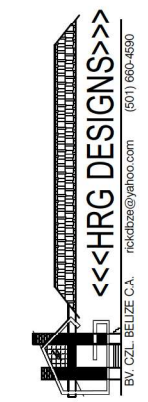
REVIEWED
By A. Kevin Cob at 1:09 pm, Apr 15, 2025



SECTIONAL ELEVATION X-X'
SCALE: 1/4" = 1'-0"



SECTIONAL ELEVATION Y-Y'
SCALE: 1/4" = 1'-0"



PROJECT
PROPOSED
RESIDENTIAL BUILDING

TITLE
SECTIONAL ELEVATION
X-X' & Y-Y'

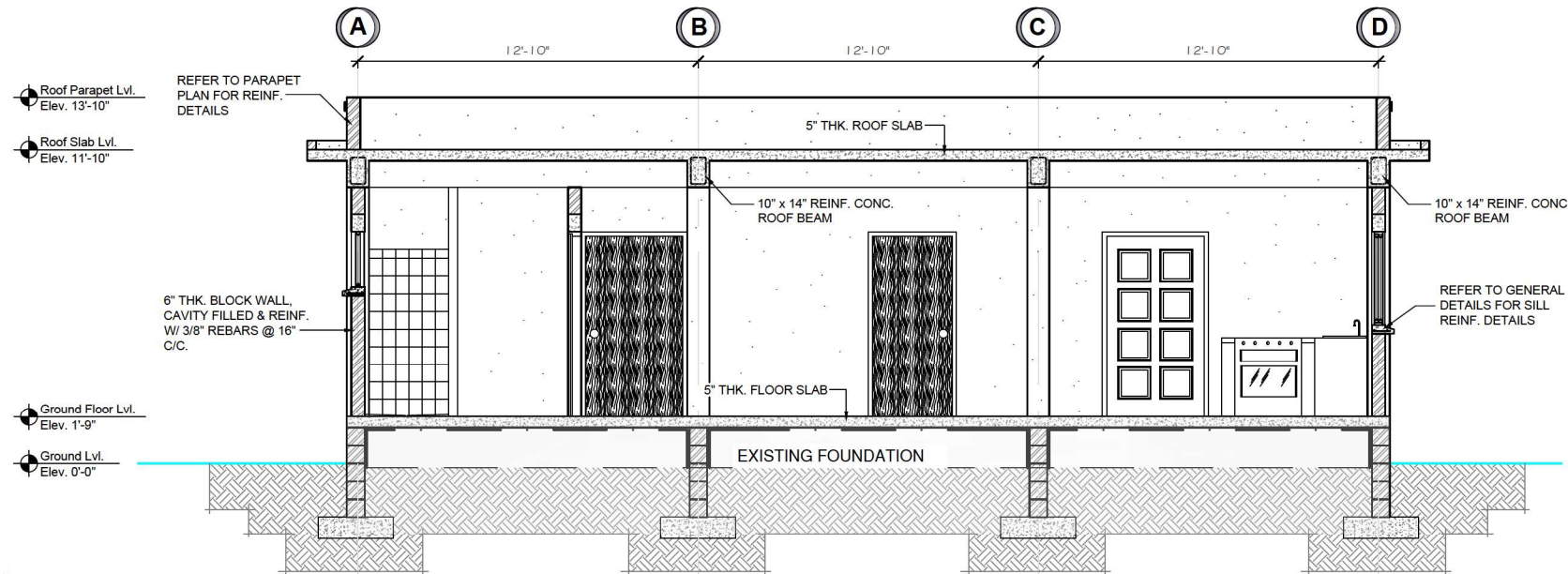
CLIENT
S. CARILLO & E. DIEGO

CAD FILE REF
C:\Program files\Auto Cad\Projects\CZL

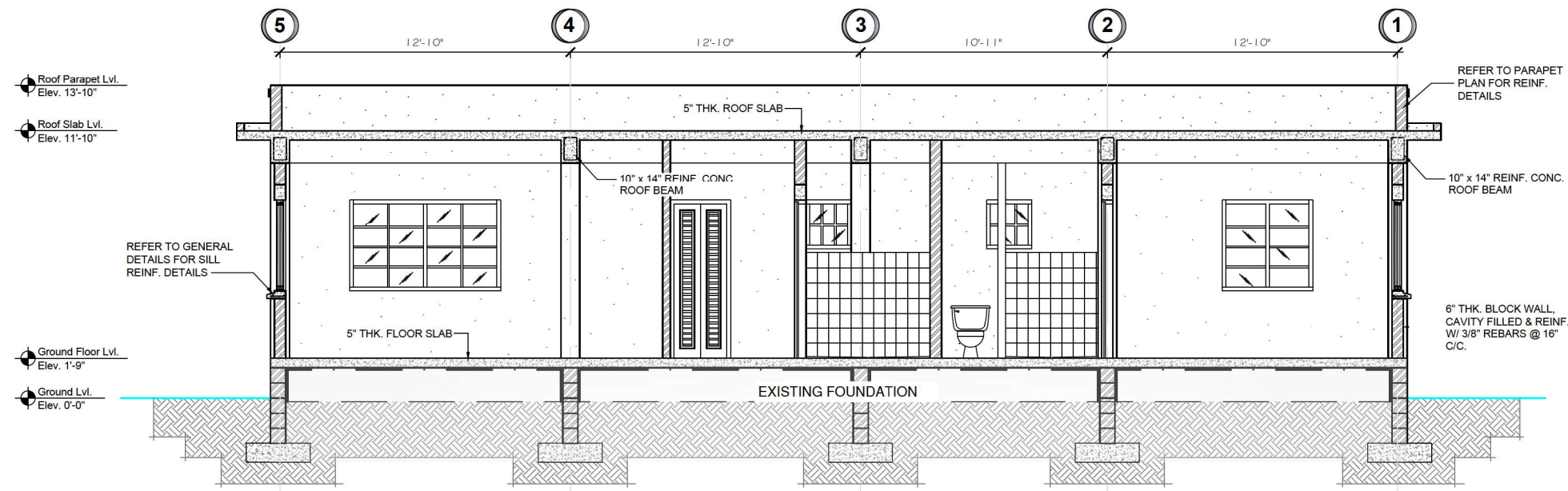
Design	HRG	Drawn Scale	1:1
Drawn	HG/AG	Plotted Scale	As Shown
Checked	HG		
Date	2025		

REV. A/1
2513-A5
DWG SHEET No.

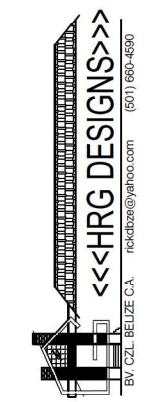
REVIEWED
By A. Kevin Cob at 1:09 pm, Apr 15, 2025



SECTIONAL ELEVATION X-X'
SCALE: 1/4" = 1'-0"



SECTIONAL ELEVATION Y-Y'
SCALE: 1/4" = 1'-0"



PROJECT
PROPOSED
RESIDENTIAL BUILDING

TITLE
SECTIONAL ELEVATION
X-X' & Y-Y'

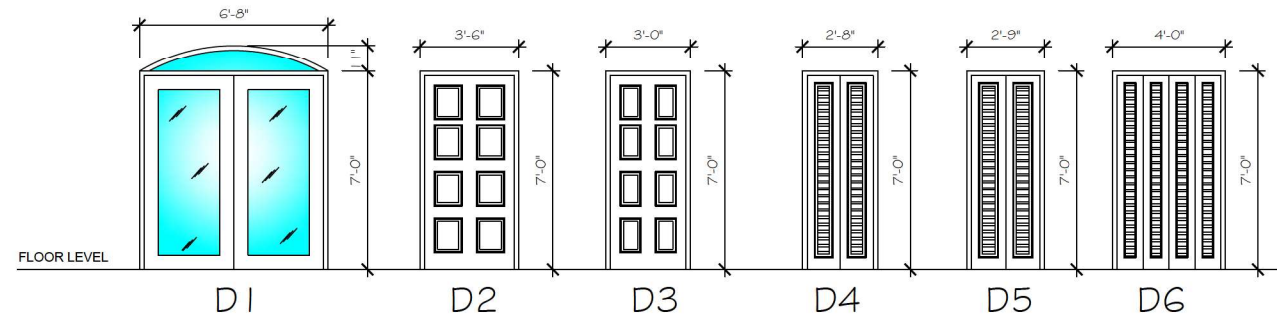
CLIENT
S. CARILLO & E. DIEGO

CAD FILE REF
C:\Program files\Auto Cad\Projects\CZL

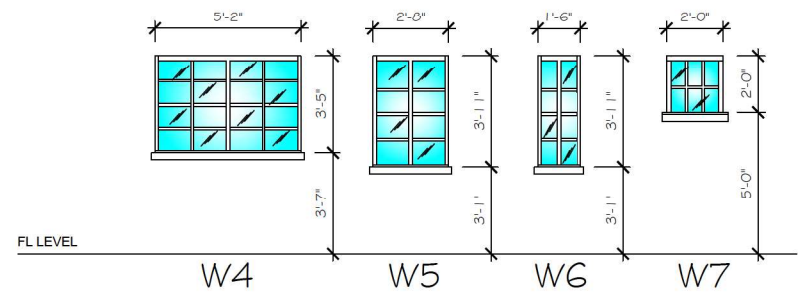
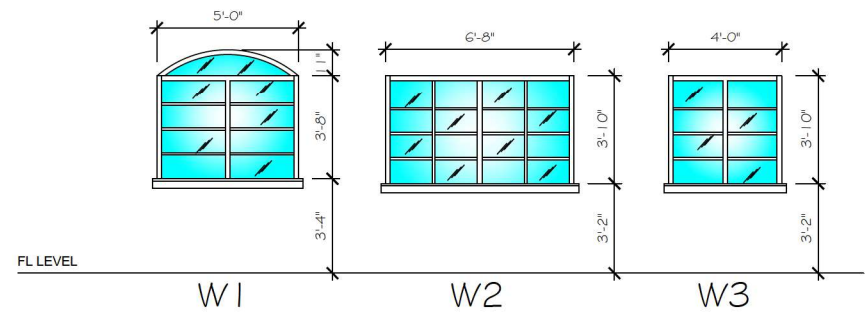
Design	HRG	Drawn Scale	1:1
Drawn	HG/AG	Plotted Scale	As Shown
Checked	HG		
Date	2025		

REV. A/1
2513-A5
DWG SHEET No.

REVIEWED
By A. Kevin Cob at 1:09 pm, Apr 15, 2025



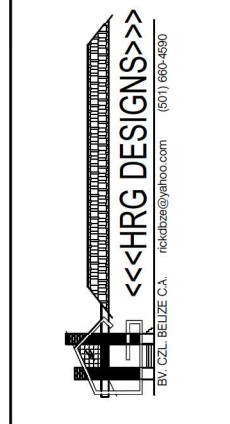
DOORS SCHEDULE
SCALE: 1/4" = 1'-0"



WINDOWS SCHEDULE
SCALE: 1/4" = 1'-0"

DOORS SCHEDULE		
DOOR	QUANT.	DESCRIPTION
D1	1	GLASS SLIDING DOUBLE DOOR WITH FRAME (COMPLETE WITH IRONMONGERY)
D2	2	MAHOGANY PANEL DOOR SANDED, SEALED AND VARNISHED WITH FRAME (COMPLETE WITH IRONMONGERY)
D3	5	MAHOGANY PANEL DOOR SANDED, SEALED AND VARNISHED WITH FRAME (COMPLETE WITH IRONMONGERY)
D4	2	MAHOGANY LOUVER DOOR SANDED, SEALED AND VARNISHED WITH FRAME (COMPLETE WITH IRONMONGERY)
D5	1	MAHOGANY LOUVER DOOR SANDED, SEALED AND VARNISHED WITH FRAME (COMPLETE WITH IRONMONGERY)
D6	2	MAHOGANY LOUVER DOOR SANDED, SEALED AND VARNISHED WITH FRAME (COMPLETE WITH IRONMONGERY)

WINDOWS SCHEDULE		
DOOR	QUANT.	DESCRIPTION
W1	2	WHITE ALUMINUM/TINTED GLASS FRENCH DOUBLE HUNG WINDOW
W2	1	WHITE ALUMINUM/TINTED GLASS FRENCH DOUBLE HUNG WINDOW
W3	3	WHITE ALUMINUM/TINTED GLASS FRENCH DOUBLE HUNG WINDOW
W4	1	WHITE ALUMINUM/TINTED GLASS FRENCH DOUBLE HUNG WINDOW
W5	2	WHITE ALUMINUM/TINTED GLASS FRENCH SINGLE HUNG WINDOW
W6	1	WHITE ALUMINUM/TINTED GLASS FRENCH SINGLE HUNG WINDOW
W7	2	WHITE ALUMINUM/TINTED GLASS FRENCH SINGLE AWNING WINDOW



PROJECT
PROPOSED RESIDENTIAL BUILDING

TITLE
WINDOWS & DOORS SCHEDULES

CLIENT
S. CARILLO & E. DIEGO

CAD FILE REF
C:\Program files\Auto Cad\Projects\CZL

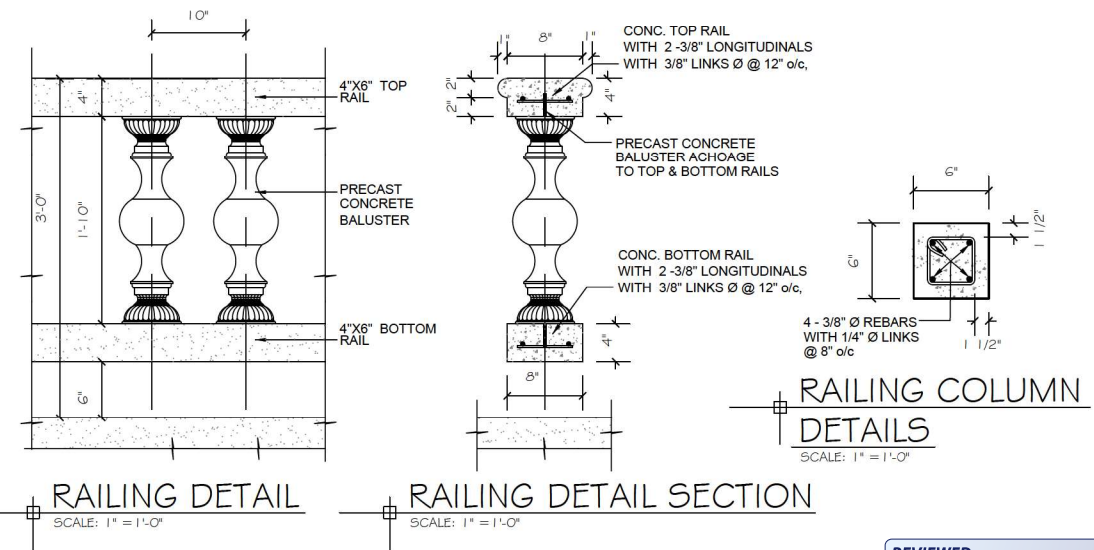
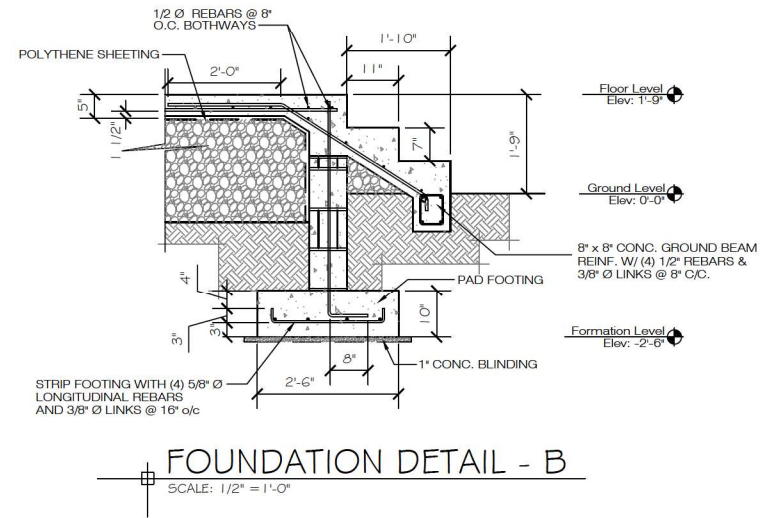
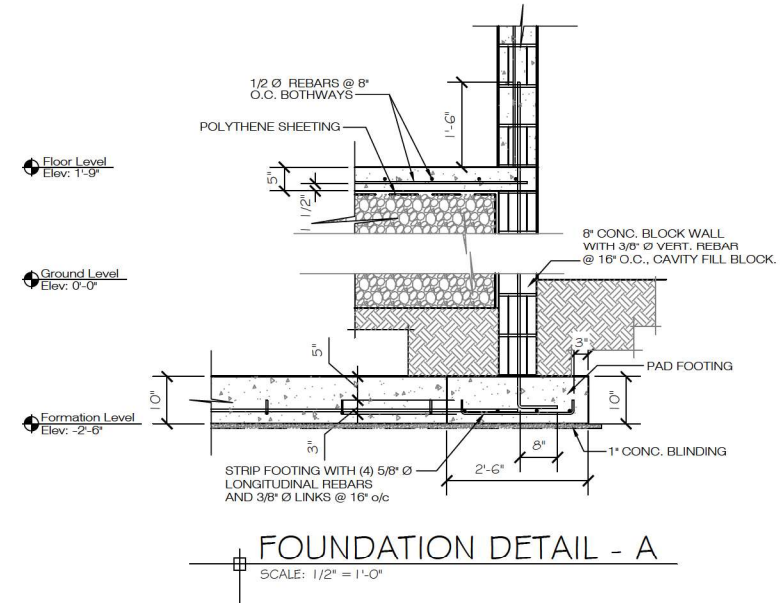
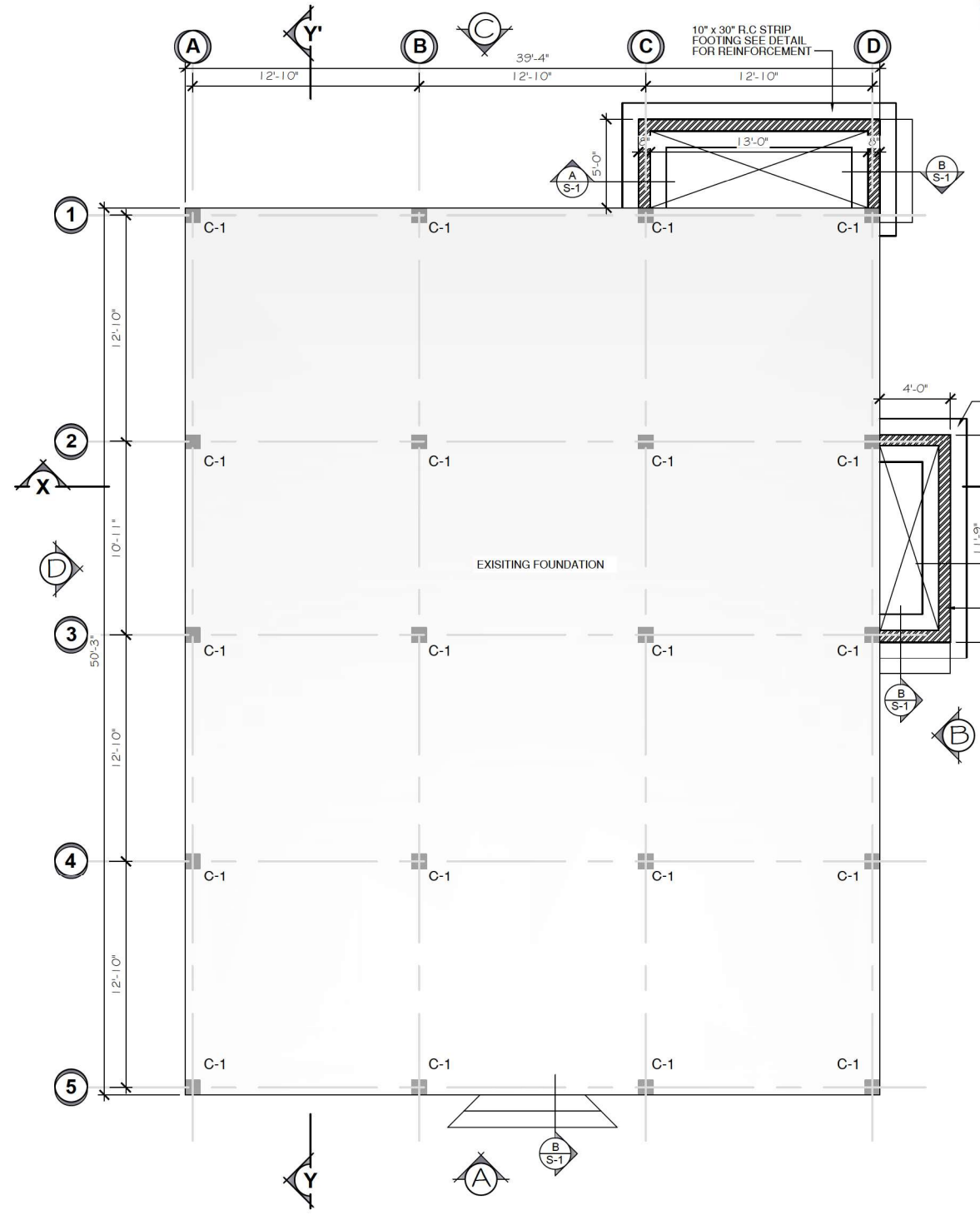
Design: HRG
Drawn: HG/AG
Checked: HG
Date: 2025

Drawn Scale: 1:1
Plotted Scale: As Shown

REV. A/1

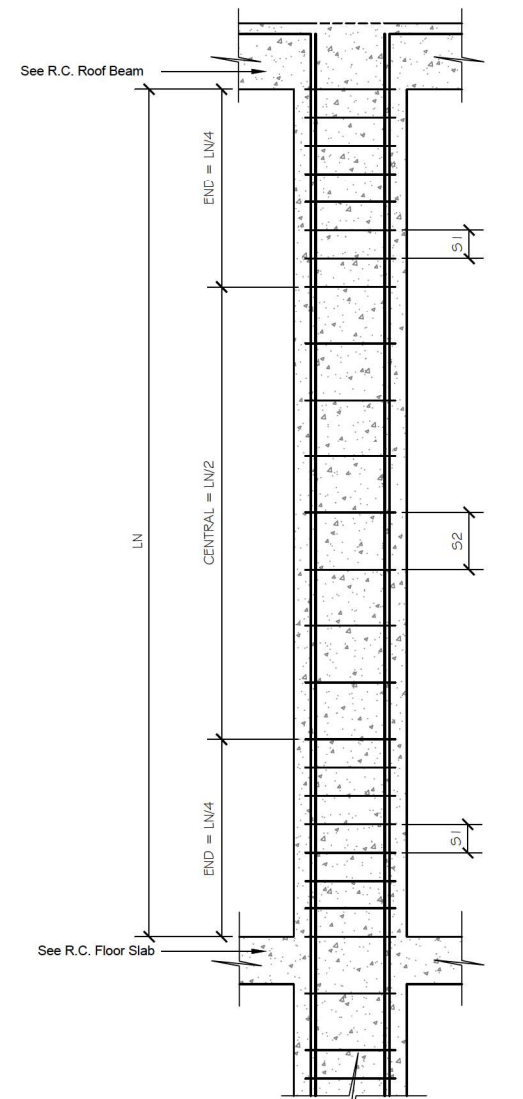
DWG SHEET No. 2513-A6

REVIEWED
By A. Kevin Cob at 1:09 pm, Apr 15, 2025

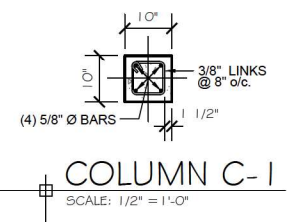


Revised by Registered Professional	
 BV, CZL, BELIZE C.A. rckkbz@yahoo.com (501) 660-4690	
PROJECT	PROPOSED RESIDENTIAL BUILDING
TITLE	FOUNDATION PLAN AND REINFORCEMENT DETAILS
CLIENT	S. CARILLO & E. DIEGO
CAD FILE REF	C:\Program files\Auto Cad\Projects\CZL
Drawn Scale	1:1
Plotted Scale	As Shown
Design	HRG
Drawn	HG/AG
Checked	HG
Date	2025
REV.	A/1
DWG. SHEET No.	2513-S1

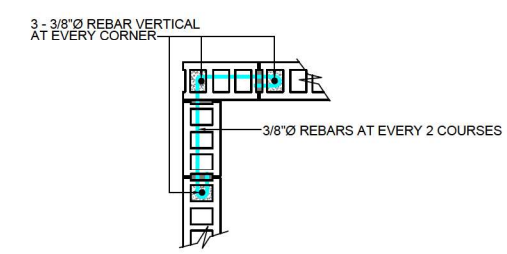
REVIEWED
By A. Kevin Cob at 1:09 pm, Apr 15, 2025



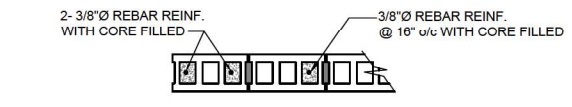
COLUMN DETAIL
N.T.S.



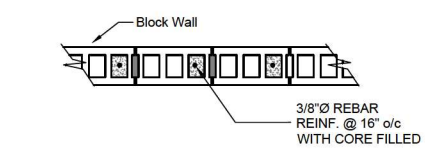
NOTE:
 * STIRRUP SPACING AT THE END OF COLUMNS TO BE 3/8" Ø BARS @ 4" O.C. (S1)
 * STIRRUP SPACING IN CENTRAL PORTION TO BE 3/8" Ø BARS @ 8" O.C. (S2)



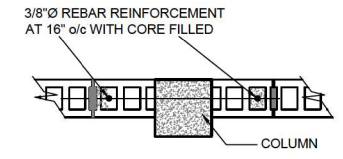
TYPICAL CORNER WALL DETAIL
N.T.S.



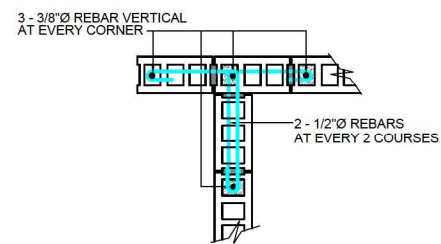
TYPICAL END WALL DETAIL
N.T.S.



TYPICAL WALL DETAIL
N.T.S.



TYPICAL WALL/COLUMN DETAIL
N.T.S.



TYPICAL 'T' INTERSECTION BLOCK WALL DETAIL
N.T.S.

NOTES

a) - ALL REINFORCEMENT TO HAVE A MINIMUM COVERAGE OF 1-1/2" UNLESS SPECIFIED MORE.
 * CONCRETE CAST AGAINST AND PERMANENTLY EXPOSED TO EARTH, 3 INCHES MINIMUM.
 b) - ALL REINFORCEMENT BARS TO HAVE A MINIMUM OVER LAP OF 2'-0"
 c) - BARS TO BE BENT ACCORDING TO MINIMUM REQUIREMENTS SHOWN
 d) - ALL CONCRETE TO HAVE A MINIMUM OF 3500 psi.
 e) - 3000 PSI MINIMUM CONCRETE STRENGTH ALLOWABLE FOR CAVITY FILL.

GENERAL STRUCTURES NOTES

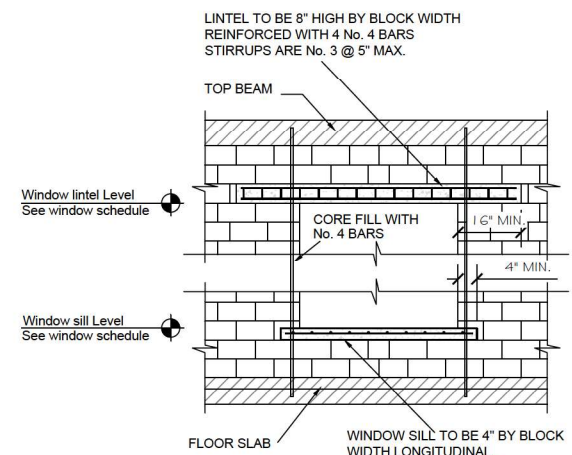
(A) CONCRETE WORKS.
 -FC = 4000 PSI AT 28 DAYS CUBE TEST
 -GRAVEL FOR READY MIX AND ON SITE CONCRETE TO BE CRUSHED RIVER OR CRUSHED LIMESTONE MAX. AGG. SIZE = 3/4"
 -SAND FOR STRUCTURAL CONCRETE TO BE CLEAN RIVER SAND
 -CURING METHODS AND TIME:
 MIN. CURING TIME IS TO BE 7 DAYS TO HORIZONTAL VERTICAL AND INCLINED SURFACES BY ONE OF THE FOLLOWING METHODS:
 1. BY PONDING
 2. BY SPRINKLING APPLICATION CONNECTED TO THE MAINS
 3. BY THE USE OF ABSORBENT MATERIALS KEPT CONSTANTLY WET.
 4. BY THE USE OF AN IMPERVIOUS MATERIAL, CONCRETE SURFACE TO BE DRENCHED PRIOR TO COMPLETE COVERING WITH AN IMPERVIOUS MATERIAL. THIS IS TO BE WEIGHED DOWN ON THE SURFACE AND SEALED AT THE EDGES.
 5. APPLICATION OF A LAYER OF MIN. 1/2" THK. WHITE SAND AND KEEPING IT WET FOR 7 DAYS MIN. (HORIZONTAL SLABS)
 6. ANY UNSUPPORTED BEAM SECTIONS MUST REMAIN ON TEMPORARY SUPPORTED FORMWORK FOR A MINIMUM TIME OF 21 DAYS
 - RENDERING: WALLS TO BE FINISHED WITH A 1/2" THICK PLASTER CONSISTING OF TWO COATS OF A SAND-CEMENT MIX THROWN WITH FORCE ONTO THE SURFACE. THE SAND FOR THE THE SECOND COAT IS TO BE FINE WHITE SAND WASHED AND SIEVED TO REMOVE ALL PLASTIC AND DELETERIOUS MATERIALS (CLAY AND ROOTS). TIME MUST BE ALLOWED FOR THE FIRST COAT TO SET AND A RETARDANT ADDITIVE IS RECOMMENDED TO AVOID FAST DRYING.
 THE RENDERING SHALL BE DONE BY LEVELING FIRST THE WALLS WITH SAND-CEMENT MIX GUIDES AND SCRAPING WITH A STRAIGHT EDGE.
 -SCREEDING: ALL CONCRETE SCREEDS TO BE APPLIED WHEN SURFACES OF THE SLAB IS STILL NEW. PRIOR TO SCREEDING THE SURFACE SHOULD BE HACKED, DUSTED, WASHED AND FLOODED OVER NIGHT. THE EXCESS WATER TO BE REMOVED BEFORE STARTING THE SCREEDING WORKS.
 (B) STEEL WORKS
 -REBARS SHALL CONFORM TO ASTM 615 GRADE 60.
 -MIN COVER TO REBARS SHALL BE:
 FOOTINGS = 3" MIN.
 GROUND BEAMS = 1" MIN.
 STUB COLUMNS = 1.5" MIN
 COLUMNS = 1.5" MIN
 BEAMS = 1.5" MIN
 OTHER ELEMENTS = 1" MIN UNLESS STATED OTHERWISE
 LINTELS TO BEAR 16" MIN ON EACH SIDE OF OPENING.
 MIN. SPLICE LENGTH FOR REBARS IS 40 X BAR DIAMETER
 RADIUS OF HOOKS IN REBARS = 4 X BAR DIAMETER
 HOOKS ON TIES SHALL BE ROTATED ALONG THE LENGTH OF THE BEAMS AND COLUMNS.

BAR BENDING DETAIL
N.T.S.

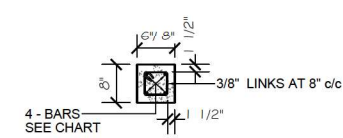
BAR Ø	D	J	H
3/8"	2-1/4"	3-1/4"	6"
1/2"	3"	4"	8-1/4"
5/8"	3-3/4"	5-1/8"	10-1/4"
3/4"	4-1/2"	6"	12-3/4"

BAR Ø	D	J
3/8"	2"	6"
1/2"	3-1/2"	8-1/4"
5/8"	4-1/2"	10-1/4"
3/4"	5-1/4"	12-3/4"

BAR Ø	D	J
3/8"	2"	2-1/2"
1/2"	3-1/2"	3"
5/8"	3-3/4"	3-3/4"
3/4"	3-3/4"	4-1/2"



TYPICAL SILL & LINTEL DETAIL
N.T.S.



LINTEL	CLEAR SPAN	# / SIZE
A*	4'-0"	4 No. 3
BY	6'-0"	4 No. 4
	8'-0"	4 No. 5

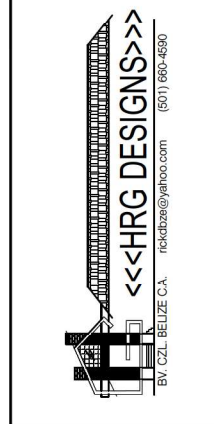
Note: x = 6" min. (BLOCK WIDTH)

NOTE:
 LINTELS TO BE WINDOW WIDTH PLUS 16" EACH SIDE MIN.
 NOTE:
 1. DETAIL ALSO APPLIES TO DOORS, EXCEPT NO SILL IS REQUIRED.

LINTEL DETAIL
N.T.S.



REVIEWED
 By A. Kevin Cob at 1:09 pm, Apr 15, 2025



PROJECT
PROPOSED RESIDENTIAL BUILDING

TITLE
COLUMNS, WALL JOINTS & LINTEL WINDOWS SILL & LINTEL REINFORCEMENT DETAILS

CLIENT
S. CARILLO & E. DIEGO

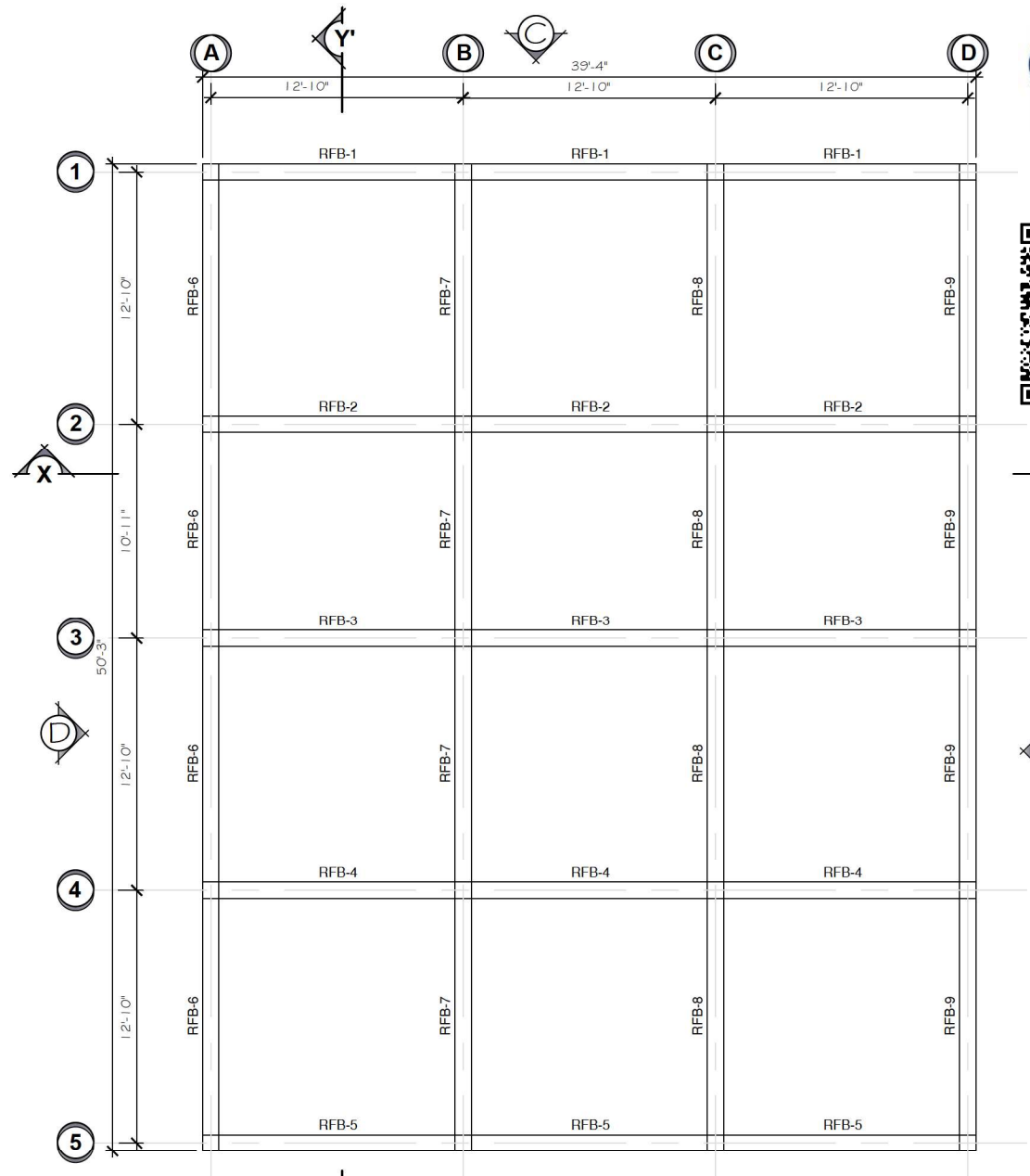
CAD FILE REF
 C:\Program files\Auto Cad\Projects\CZL

Design: HRG
 Drawn: HG/AG
 Checked: HG
 Date: 2025

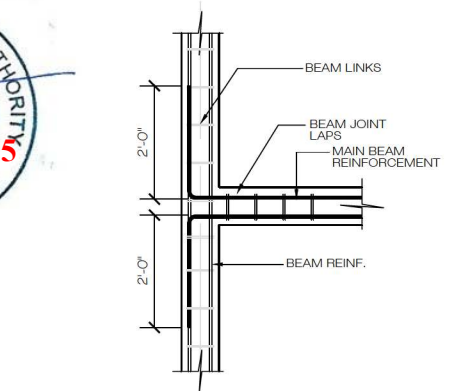
Drawn Scale: 1:1
 Plotted Scale: As Shown

REV. A/1

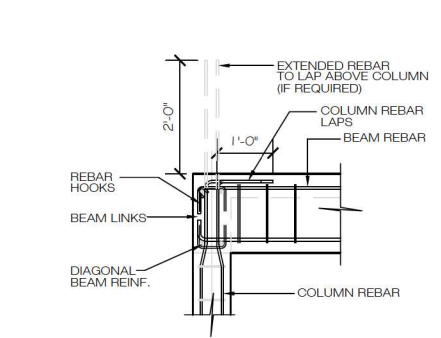
DWG. SHEET No. 2513-S2



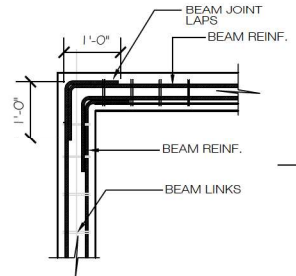
ROOF BEAM LAYOUT
SCALE: 3/16" = 1'-0"



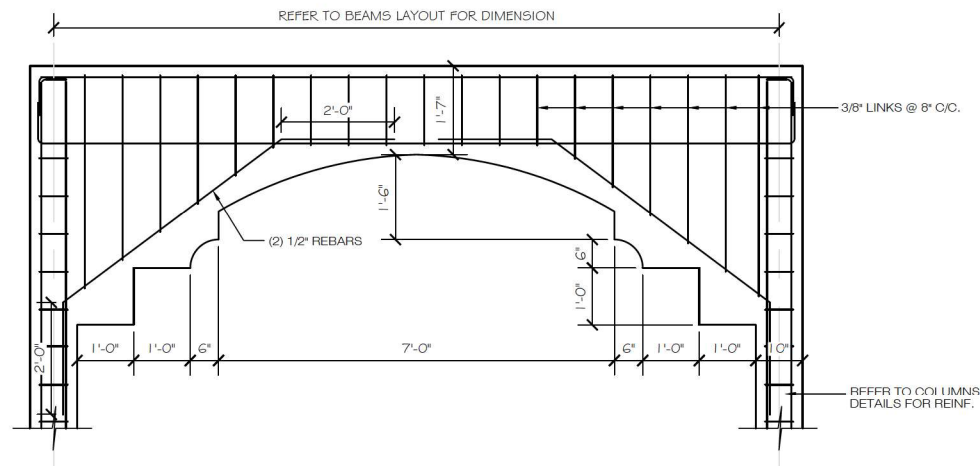
BEAM 'T' JOINT DETAIL
SCALE: 1/2" = 1'-0"



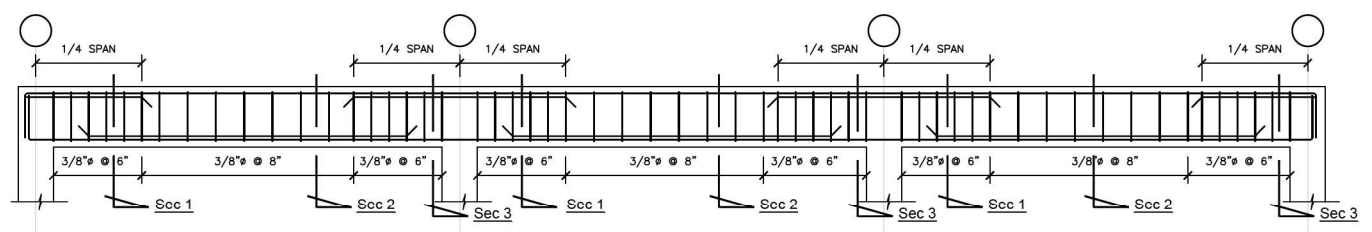
TYP. COLUMN/BEAM JOINT DETAIL
SCALE: 1/2" = 1'-0"



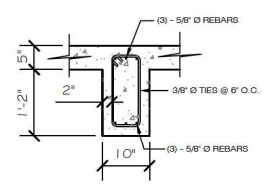
BEAMS 'L' JOINT DETAIL
SCALE: 1/2" = 1'-0"



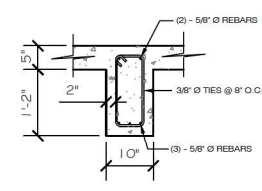
TYP. ARCH REINF. DETAILS
SCALE: 1/2" = 1'-0"



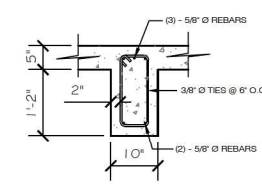
RFB-1 TO RFB-9 REINF. DETAILS PLAN
SCALE: 3/8" = 1'-0"



SEC 1
SCALE: 1/2" = 1'-0"

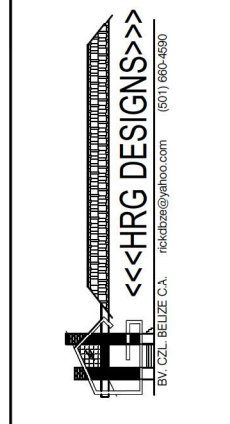


SEC 2
SCALE: 1/2" = 1'-0"



SEC 3
SCALE: 1/2" = 1'-0"

REVIEWED
By A. Kevin Cob at 1:09 pm, Apr 15, 2025



PROJECT
PROPOSED
RESIDENTIAL BUILDING

TITLE
ROOF BEAMS LAYOUT &
REINFORCEMENT DETAILS

CLIENT
S. CARILLO & E. DIEGO

CAD FILE REF
C:\Program files\Auto Cad\Projects\CZL

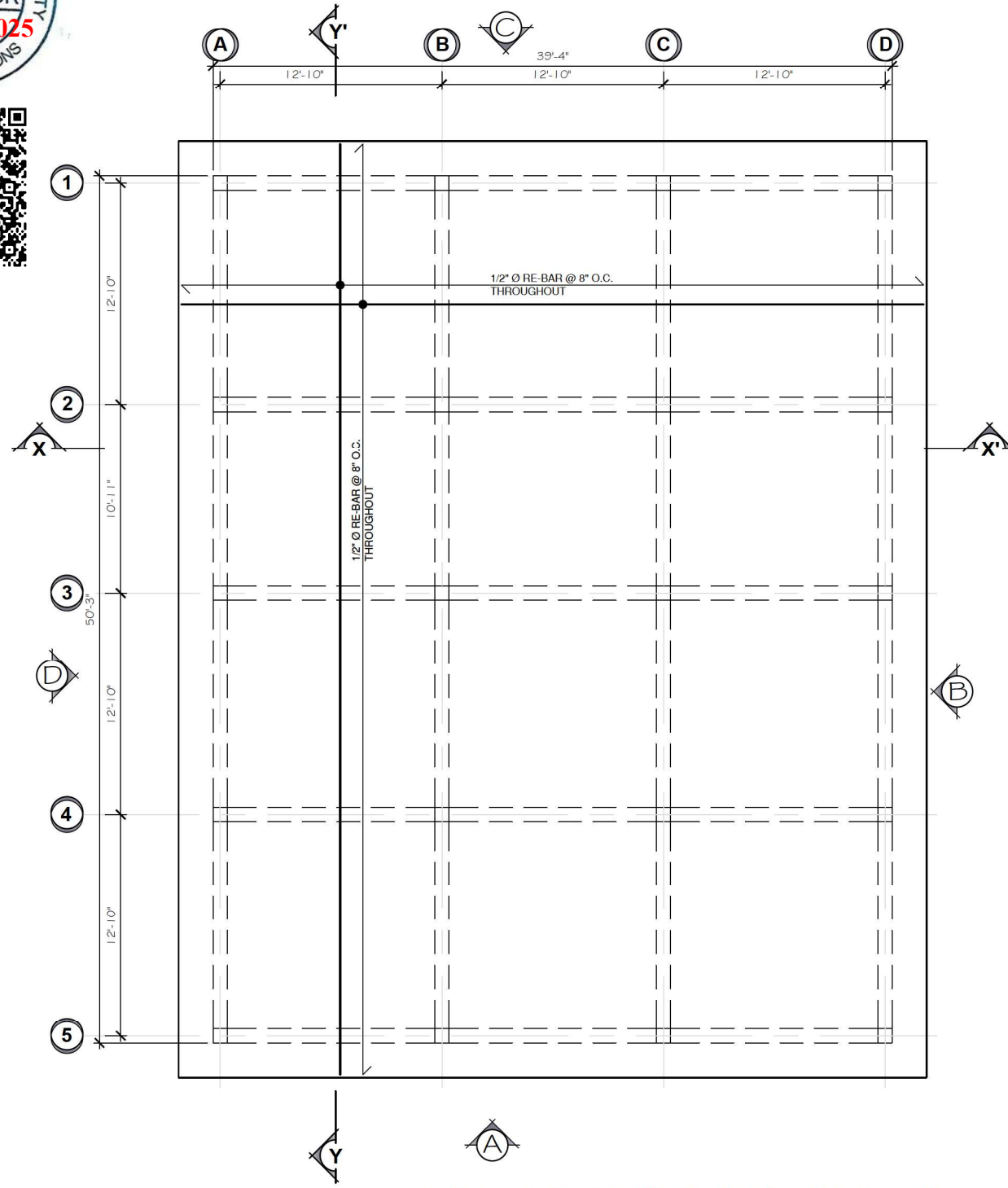
Drawn Scale
HG/AG 1:1

Checked Scale
HG As Shown

Date
2025

REV.
A/1

DWG SHEET No.
2513-S3

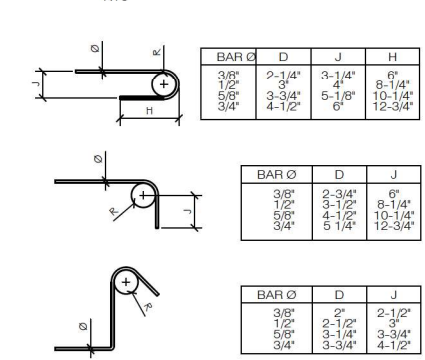


ROOF SLAB REINFORCEMENT LAYOUT
SCALE: 3/16" = 1'-0"

GENERAL STRUCTURES NOTES

(A) CONCRETE WORKS.
-FC = 4000 PSI AT 28 DAYS CUBE TEST
-GRAVEL FOR READY MIX AND ON SITE CONCRETE TO BE CRUSHED RIVER OR CRUSHED LIMESTONE MAX. AGG. SIZE = 3/4"
-SAND FOR STRUCTURAL CONCRETE TO BE CLEAN RIVER SAND
-CURING METHODS AND TIME:
MIN. CURING TIME IS TO BE 7 DAYS TO HORIZONTAL, VERTICAL AND INCLINED SURFACES BY ONE OF THE FOLLOWING METHODS:
1. BY PONDING
2. BY SPRINKLING APPLICATION CONNECTED TO THE MAINS
3. BY THE USE OF ABSORBENT MATERIALS KEPT CONSTANTLY WET.
4. BY THE USE OF AN IMPERVIOUS MATERIAL, CONCRETE SURFACE TO BE DRENCHED PRIOR TO COMPLETE COVERING WITH AN IMPERVIOUS MATERIAL. THIS IS TO BE WEIGHED DOWN ON THE SURFACE AND SEALED AT THE EDGES.
5. APPLICATION OF A LAYER OF MIN. 1/2" THK. WHITE SAND AND KEEPING IT WET FOR 7 DAYS MIN. (HORIZONTAL SLABS)
6. ANY UNSUPPORTED BEAM SECTIONS MUST REMAIN ON TEMPORARY SUPPORTED FORMWORK FOR A MINIMUM TIME OF 21 DAYS
- RENDERING: WALLS TO BE FINISHED WITH A 1/2" THICK PLASTER CONSISTING OF TWO COATS OF A SAND-CEMENT MIX THROWN WITH FORCE ONTO THE SURFACE. THE SAND FOR THE SECOND COAT IS TO BE FINE WHITE SAND WASHED AND SIEVED TO REMOVE ALL PLASTIC AND DELETERIOUS MATERIALS (CLAY AND ROOTS). TIME MUST BE ALLOWED FOR THE FIRST COAT TO SET AND A RETARDANT ADDITIVE IS RECOMMENDED TO AVOID FAST DRYING. THE RENDERING SHALL BE DONE BY LEVELING FIRST THE WALLS WITH SAND-CEMENT MIX GUIDES AND SCRAPING WITH A STRAIGHT EDGE.
-SCREEDING: ALL CONCRETE SCREEDS TO BE APPLIED WHEN SURFACES OF THE SLAB IS STILL NEW. PRIOR TO SCREEDING THE SURFACE SHOULD BE HACKED, DISTED, WASHED AND FLOODED OVER NIGHT. THE EXCESS WATER TO BE REMOVED BEFORE STARTING THE SCREEDING WORKS.
(B) STEEL WORKS
-REBARS SHALL CONFORM TO ASTM 615 GRADE 60.
-MIN COVER TO REBARS SHALL BE"
FOOTINGS = 3" MIN.
GROUND BEAMS = 1" MIN.
STUB COLUMNS = 1.5" MIN
COLUMNS = 1.5" MIN
BEAMS = 1.5" MIN
OTHER ELEMENTS = 1" MIN UNLESS STATED OTHERWISE
LINTELS TO BEAR 16" MIN ON EACH SIDE OF OPENING.
MIN. SPLICE LENGTH FOR REBARS IS 40 X BAR DIAMETER
RADIUS OF HOOKS IN REBARS = 4 X BAR DIAMETER
HOOKS ON TIES SHALL BE ROTATED ALONG THE LENGTH OF THE BEAMS AND COLUMNS.

BAR BENDING DETAIL



NOTES

- a) - ALL REINFORCEMENT TO HAVE A MINIMUM COVERAGE OF 1-1/2" UNLESS SPECIFIED MORE.
- * CONCRETE CAST AGAINST AND PERMANENTLY EXPOSED TO EARTH, 3 INCHES MINIMUM.
- b) - ALL REINFORCEMENT BARS TO HAVE A MINIMUM OVER LAP OF 2'-0"
- c) - BARS TO BE BENT ACCORDING TO MINIMUM REQUIREMENTS SHOWN
- d) - ALL CONCRETE TO HAVE A MINIMUM OF 3500 psi.
- e) - 3000 PSI MINIMUM CONCRETE STRENGTH ALLOWABLE FOR CAVITY FILL.

REVIEWED
By A. Kevin Cob at 1:09 pm, Apr 15, 2025

Revised by Registered Professional

HRG DESIGNS
BV, CZL, BELIZE C.A. rick@hrgdesigns.com (501) 660-4690

PROJECT: PROPOSED RESIDENTIAL BUILDING
TITLE: ROOF SLAB REINFORCEMENT LAYOUT

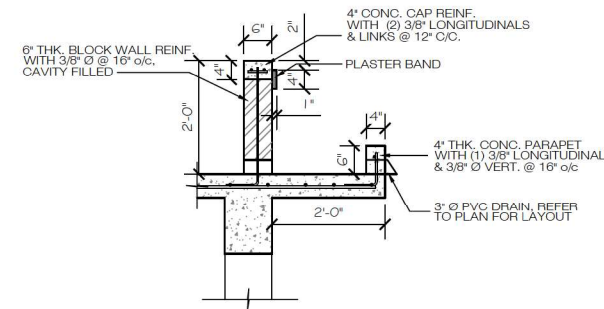
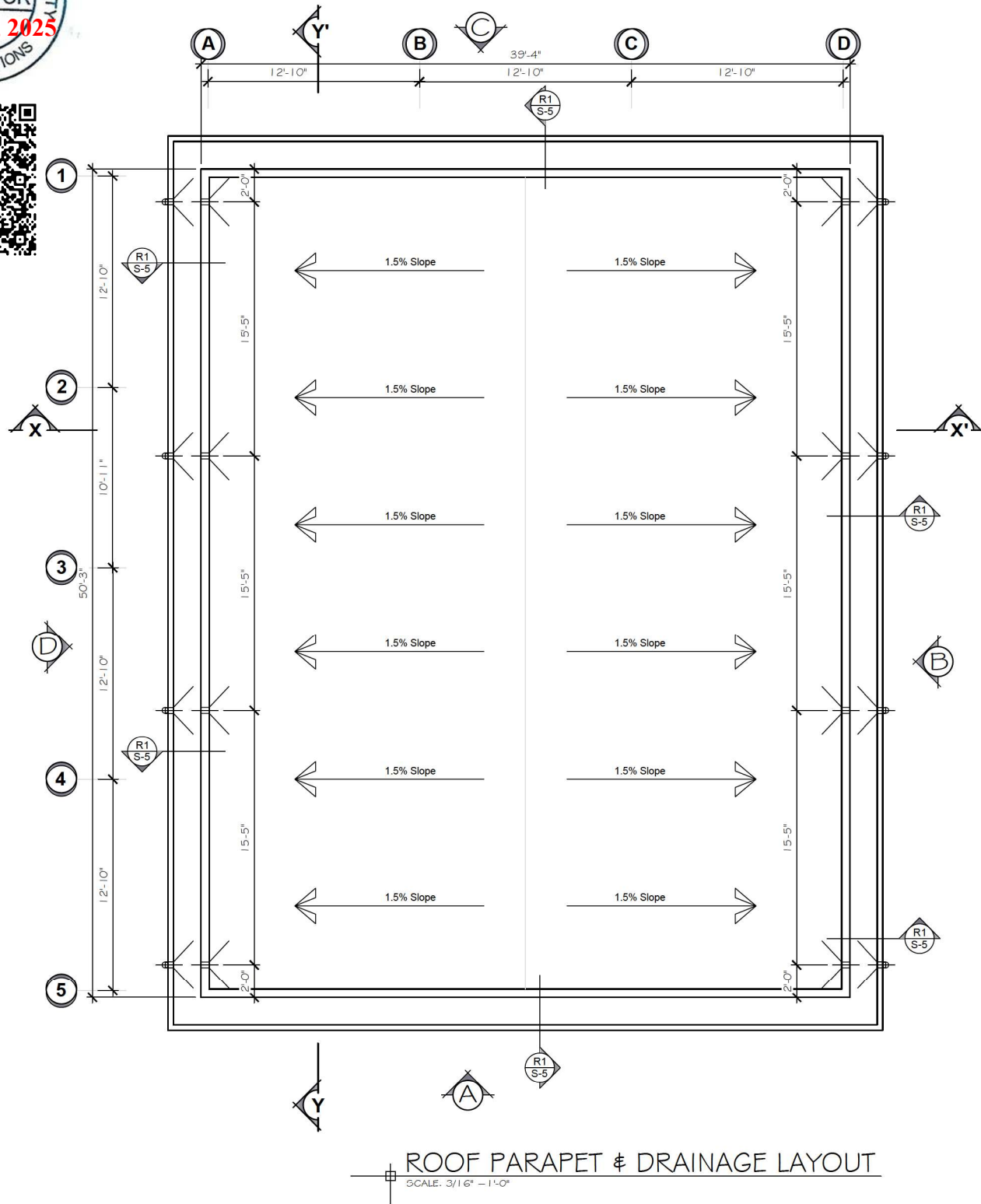
CLIENT: S. CARILLO & E. DIEGO
CAD FILE REF: C:\Program files\Auto Cad\Projects\CZL

Drawn Scale: 1:1
Plotted Scale: As Shown

Design: HRG
Drawn: HG/AG
Checked: HG
Date: 2025

REV. A/1
2513-S4

DWG. SHEET No. 2513-S4



ROOF PARAPET - R1
SCALE: 1/2" = 1'-0"

BAR BENDING DETAIL
NTS

BAR Ø	D	J	H
3/8"	2-1/4"	3-1/4"	6"
1/2"	3"	4"	8-1/4"
5/8"	3-3/4"	5-1/8"	10-1/4"
3/4"	4-1/2"	6"	12-3/4"

BAR Ø	D	J
3/8"	2-3/4"	6"
1/2"	3-1/2"	8-1/4"
5/8"	4-1/2"	10-1/4"
3/4"	5-1/4"	12-3/4"

BAR Ø	D	J
3/8"	2"	2-1/2"
1/2"	2-1/2"	3"
5/8"	3-1/4"	3-3/4"
3/4"	3-3/4"	4-1/2"

- NOTES**
- a) - ALL REINFORCEMENT TO HAVE A MINIMUM COVERAGE OF 1-1/2" UNLESS SPECIFIED MORE.
* CONCRETE CAST AGAINST AND PERMANENTLY EXPOSED TO EARTH, 3 INCHES MINIMUM.
 - b) - ALL REINFORCEMENT BARS TO HAVE A MINIMUM OVER LAP OF 2'-0"
 - c) - BARS TO BE BENT ACCORDING TO MINIMUM REQUIREMENTS SHOWN
 - d) - ALL CONCRETE TO HAVE A MINIMUM OF 3500 PSI.
 - e) - 3000 PSI MINIMUM CONCRETE STRENGTH ALLOWABLE FOR CAVITY FILL.

REVIEWED
By A. Kevin Cob at 1:09 pm, Apr 15, 2025

Revised by Registered Professional

HRG DESIGNS
BV CZL BELIZE C.A. rick@hrgdesigns.com (501) 660-4500

PROJECT: PROPOSED RESIDENTIAL BUILDING
TITLE: ROOF PARAPET LAYOUT AND REINF. DETAILS

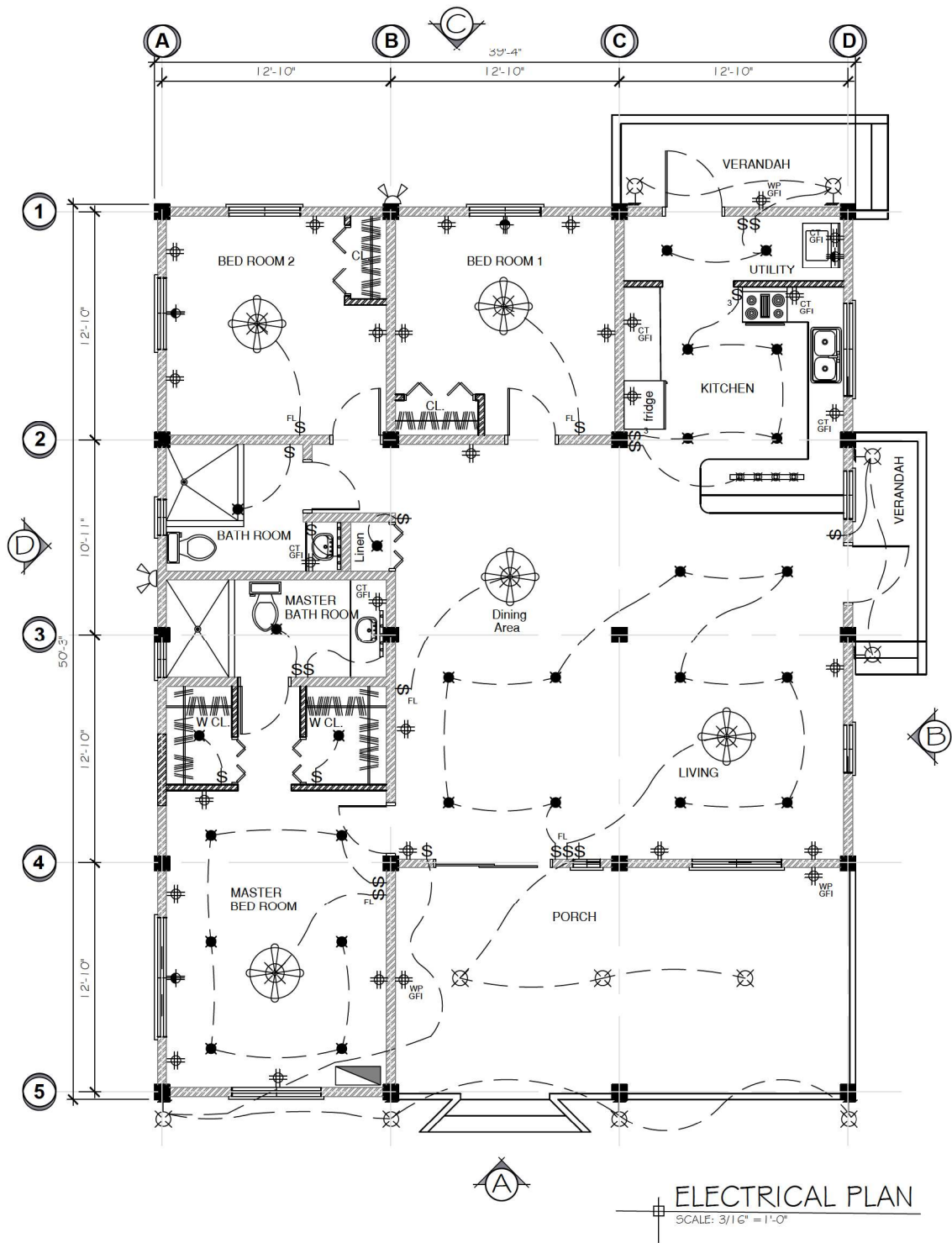
CLIENT: S. CARILLO & E. DIEGO
CAD FILE REF: C:\Program files\Auto Cad\Projects\CZL

Design: HRG
Drawn: HG/AG
Checked: HG
Date: 2025

Drawn Scale: 1:1
Plotted Scale: As Shown

REV. A/1
DWG. SHEET No. 2513-S5

SEE P.U.C. APPROVED
ELECTRICAL DESIGN



ELECTRICAL LEGEND	
SYMBOL	REMARKS
	SWITCH (52" ABOVE FFL)
	FAN WITH LIGHT SWITCH (52" ABOVE FFL)
	3 WAY SWITCH (52" ABOVE FFL)
	120V. DUPLEX OUTLET (12" ABOVE FFL)
	120V. DUPLEX OUTLET W/ GROUND FAULT INTERRUPTER (12" ABOVE FFL)
	120V. DUPLEX OUTLET AT COUNTER TOP LEVEL
	42" ABOVE FFL W/ GROUND FAULT INTERRUPTER
	120V. DUPLEX OUTLET WEATHER PROOF W/ GROUND FAULT INTERRUPTER
	220 V. OUTLET
	PHONE & INTERNET PORT AT 42" ABOVE FFL
	TELEVISION OUTLET
	PHOTOCELL
	20w T12 SINGLE FLOURESCENT TUBE PHOTO CELL OPERATED
	EXTERIOR "FLOOD" LIGHT MOTION DET.
	WALL MOUNTED INCANDESCENT LIGHT FIXTURE
	20 watt SURFACE MOUNTED LIGHT FIXTURE
	20 watt RECESSED LIGHT FIXTURE
	SUSPENDED LIGHT FIXTURE
	BATH ROOM VANITY LIGHT SET ABOVE MIRROR HEIGHT
	CEILING FAN 52" WITH LIGHT
	CEILING FAN 32" WITH LIGHT
	BREAKER MAIN DISTRIBUTION PANEL

- ALL OUTLETS AND SWITCHES ARE TO BE FLUSH MOUNTED.
- DIAMETER OF CONDUITS, WIRE AND BREAKER PANEL SPECIFICATIONS TO BE DETERMINED BY QUALIFIED ELECTRICIAN.
- ALL CIRCUITS TO BE EARTHED.
- ALL CONDUITS BURIED IN CONCRETE MUST BE OF RIGID PVC AND PROPERLY TERMINATED AT BOXES AND PANELS AND INSTALLED BEFORE CASTING CONCRETE AND/OR CORE FILLING BLOCKS.
- LIGHTING, OUTLETS AND EXTERNAL LIGHTS SHALL BE ON INDEPENDENT CIRCUITS.
- GROUNDING SYSTEM MUST BE BONDED TO NEUTRAL BUSS BUT INDEPENDENT OF NEUTRAL AND PROPERLY GROUNDED TO OBTAIN A READING OF AT LEAST 25 OHMS.
- EACH MAJOR APPLIANCE TO HAVE ITS OWN CIRCUIT.
- PROVIDE 220V CIRCUIT FOR AIR CONDITIONER UNITS.
- ALL OUTLETS ABOVE COUNTER HEIGHT IN KITCHEN AND BATHROOMS TO BE G.F.I. TYPE AS PER LOCAL CODES.
- SMOKE DETECTORS TO BE HARD-WIRED WITH BACK UP BATTERY
- COORDINATE ALL WORK WITH BUILDING CONTRACTOR.
- MECHANICAL/ELECTRICAL CONTRACTOR TO VERIFY ELECTRICAL REQUIREMENTS FOR ALL MECHANICAL EQUIPMENT, ELECTRICAL APPLIANCES ETC.
- ALL TELEPHONE, INTERNET, CABLE TV, SECURITY CABLES (low voltage) SHOULD ALL FEED BACK INTO PANEL BOXES TO PANTRY ROOM.
- VERIFY WITH OWNER LOCATION/TYPE OF ALL FIXTURES, PANEL BOXES, OUTLET PLACEMENT ETC. BY HOLDING WALK THROUGH ON THE BUILDING SITE ONCE FRAMING IS COMPLETED.

Revised by Registered Professional



PROJECT
PROPOSED
RESIDENTIAL BUILDING

TITLE
ELECTRICAL PLAN

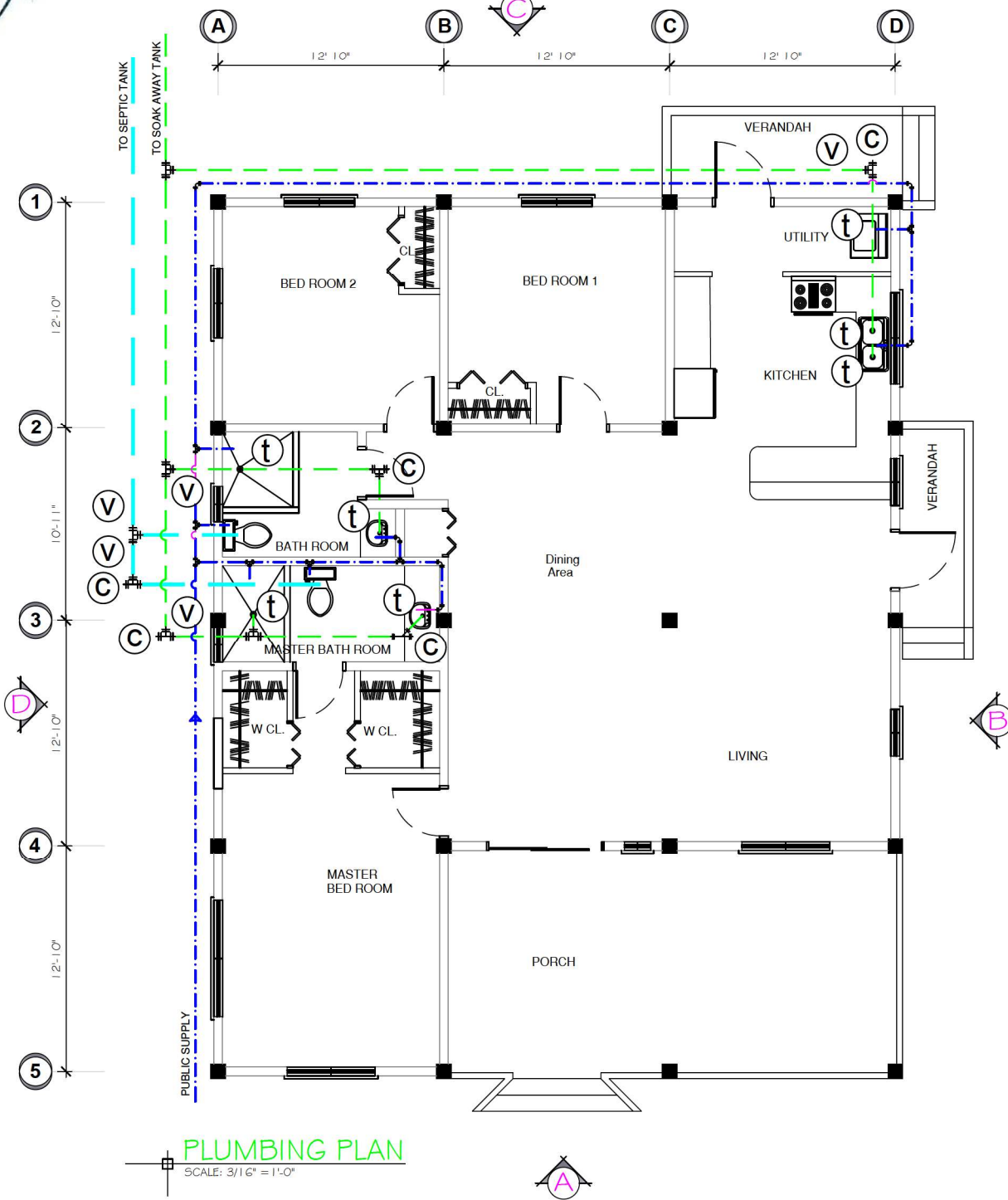
CLIENT
S. CARILLO & E. DIEGO

CAD FILE REF
C:\Program files\Auto Cad 1\Projects\CZL

Design	HRG	Drawn Scale	1:1
Drawn	HG/AG	Plotted Scale	As Shown
Checked	HG		
Date	2025		

REV. A/1
2513-E1
DWG SHEET No.

REVIEWED
By A. Kevin Cob at 1:09 pm, Apr 15, 2025



PLUMBING PLAN
SCALE: 3/16" = 1'-0"

LEGEND	
SYMBOL	DESCRIPTION
(V)	2" Ø VENT PIPE
(C)	SCREW TYPE CLEAN OUT
(t)	2" Ø P-TRAP
---	1.5" Ø P.V.C. WATER SUPPLY LINE
---	2" Ø WASTE WATER LINE
---	4" Ø SOIL LINE
↗	45° ELBOW
↘	Y ELBOW
↖	90° ELBOW
+	T JOINT
+	GATE VALVE
+	SHUT OFF VALVE
+	HOSE BIB
●	FLOOR DRAIN

NOTES:

1. MAIN POTABLE COLD WATER PIPE TO BE 1.5" Ø P.V.C. SCHEDULE 40 PIPE.
2. MAIN POTABLE HOT WATER PIPE TO BE 3/4" Ø P.V.C. SCHEDULE 40 PIPE.
3. POTABLE WATER PIPE THAT LEADS TO ACCESSORIES TO BE 1/2" Ø PVC SCHEDULE 40 PIPE.
4. DISCHARGE PIPES FROM TOILETS KNOWN AS SOIL PIPES TO BE 4" Ø PVC SCHEDULE 40 PIPE.
5. DISCHARGE PIPES FROM LAVATORIES KNOWN AS WASTE PIPES TO BE 2" Ø PVC SCHEDULE 40 PIPE.
6. SLOPE OF SOIL PIPE TO BE 2% MINIMUM. SLOPE OF WASTE PIPE TO BE 2.5% MINIMUM.
7. ALL FITTINGS FOR LINES TO BE INCLUDED.
8. VENT PIPES TO BE 2" Ø AND TO BE 24" ABOVE ROOF LINE
9. PIPES SHALL NOT PASS THROUGH MAIN STRUCTURAL BEAMS.
10. HEIGHT OF WASH HAND BASINS TO BE 31" FROM FFL
11. HEIGHT OF TOILET PAPER RACKS TO BE 2' - 0" FROM FFL.
12. WASH BASINS TO BE INSTALLED WITH P-TRAPS.

REVIEWED
By A. Kevin Cob at 1:09 pm, Apr 15, 2025

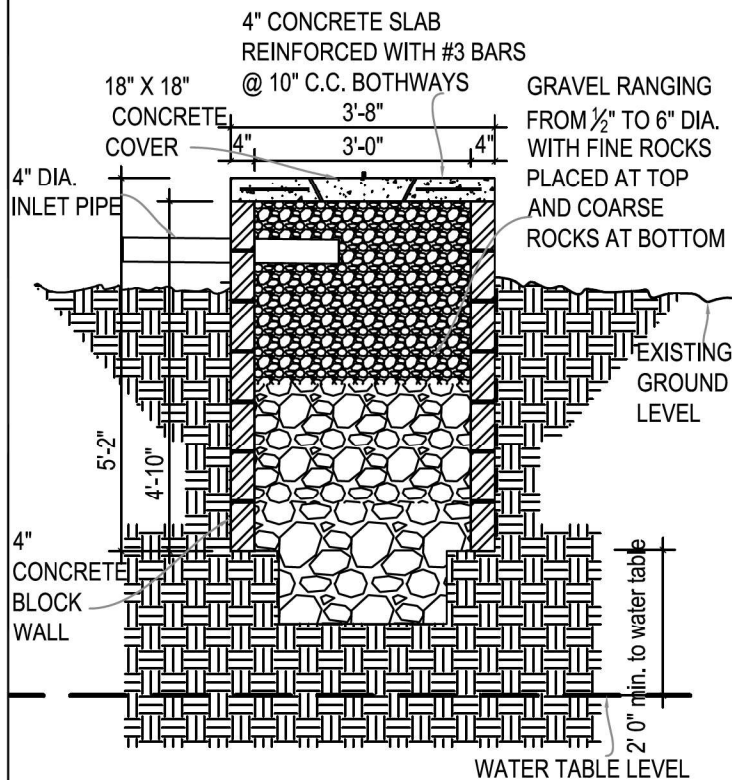
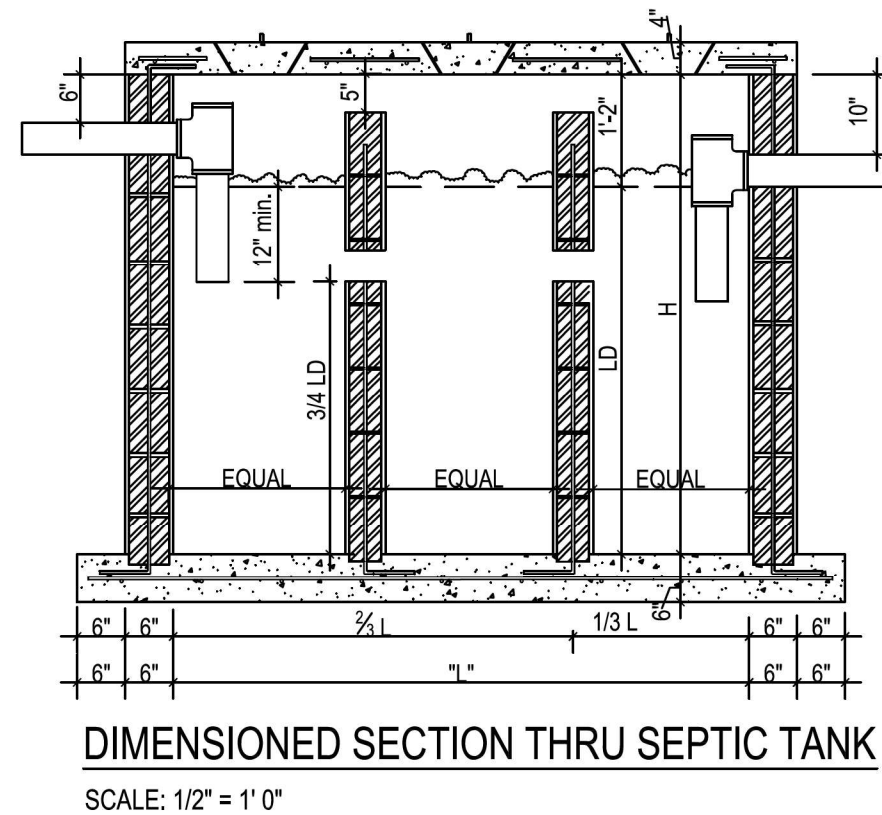
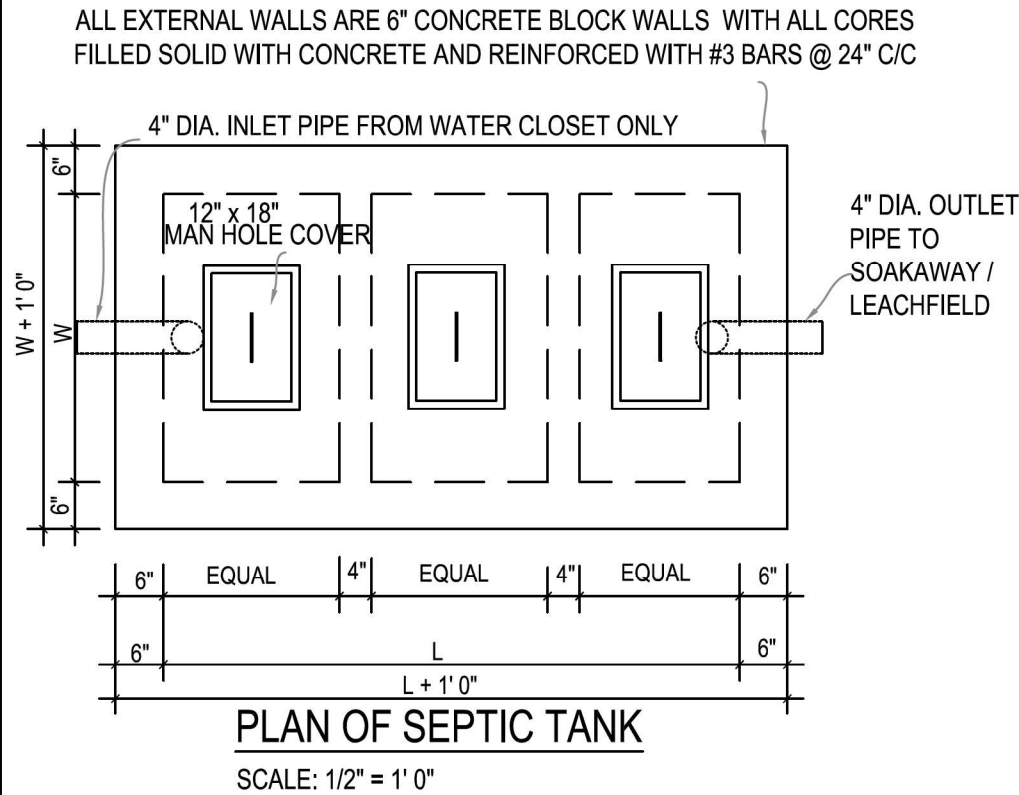
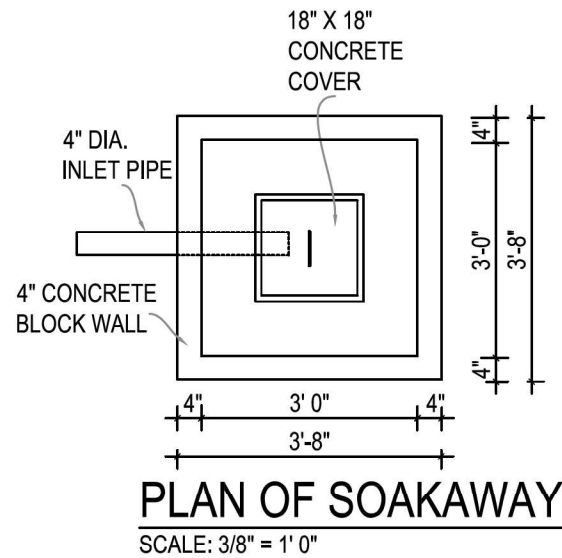
Revised by Registered Professional



PROJECT	PROPOSED RESIDENTIAL BUILDING
TITLE	PLUMBING PLAN

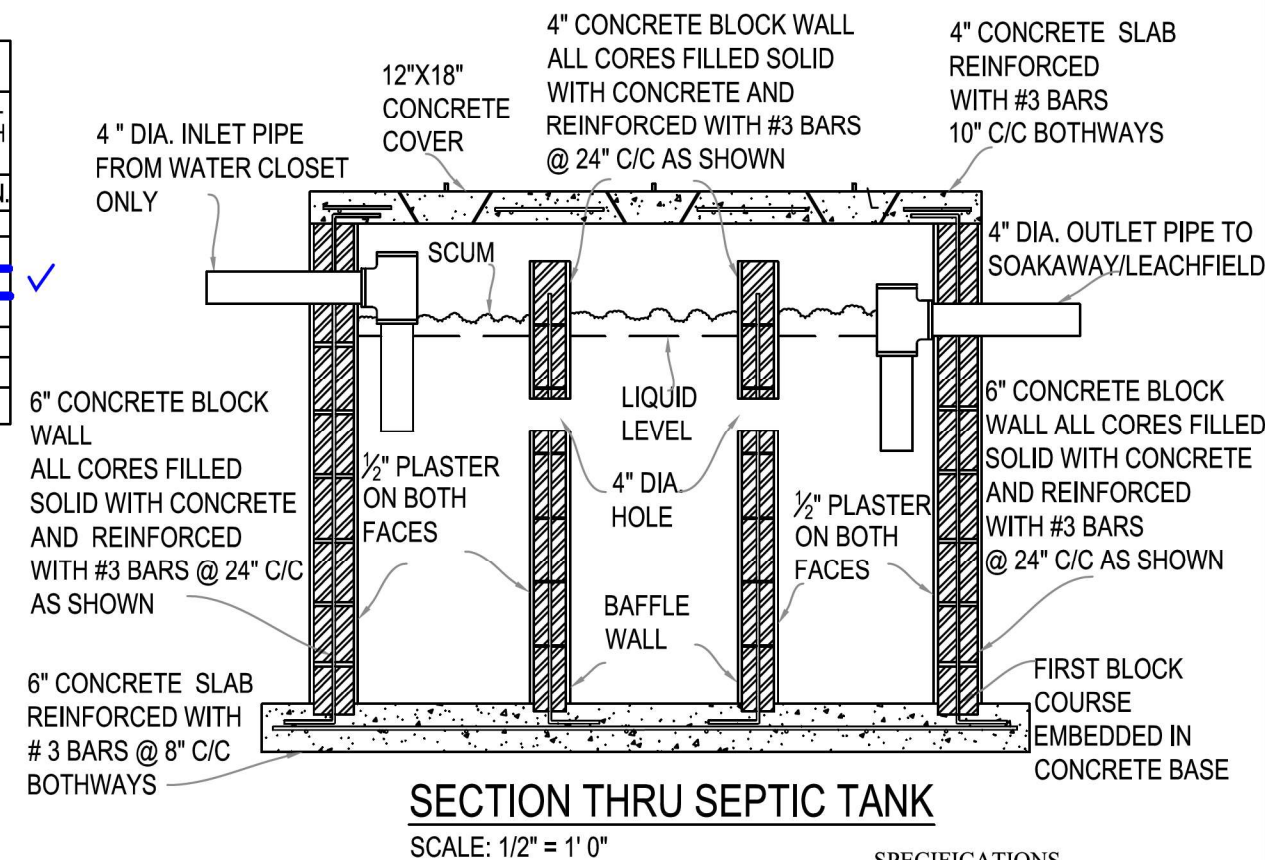
CLIENT	S. CARILLO & E. DIEGO
CAD FILE REF	C:\Program files\Auto Cad\Projects\CZL

Design	HRG	Drawn Scale	1:1
Drawn	HG/AG	Plotted Scale	As Shown
Checked	HG		
Date	2025		
DWG SHEET No.	2513-P1	REV.	A/1



MAXIMUM NO. OF PERSONS SERVED	LIQUID CAPACITY OF TANK		INTERNAL DIMENSIONS			
	GALLONS (APPROX.)	CUBIC FT.	LENGTH (L) FT. IN.	WIDTH (W) FT. IN.	LIQUID DEPTH (LD) FT. IN.	TOTAL DEPTH (H) FT. IN.
4	500	67	6 0	3 0	4 0	5 2
6	600	81	7 0	3 0	4 0	5 2
8	750	101	7 0	3 6	4 0	5 2
10	900	121	7 6	3 6	4 6	5 8
12	1100	148	8 6	4 0	4 6	5 8
14	1300	174	10 0	4 0	4 6	5 8
16	1500	201	10 0	4 6	4 6	5 8

SEPTIC TANK SIZING CHART
FOR RESIDENTIAL AND OTHER LOW IMPACT BUILDINGS ONLY



- SPECIFICATIONS**
- Inlet pipe must dip 12" below liquid level in tank.
 - Tank must be air and water tight.
 - Invert level of outlet pipe must be 2" minimum below top of baffle wall.

SOAKAWAY DETAILS
FOR RESIDENTIAL AND OTHER LOW IMPACT BUILDINGS ONLY

SEPTIC TANK DETAILS
FOR RESIDENTIAL AND OTHER LOW IMPACT BUILDINGS ONLY

REVIEWED
By A. Kevin Cob at 1:09 pm, Apr 15, 2025